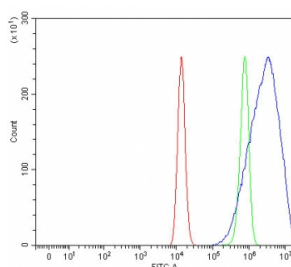


## SVOPL Antibody / SV2-related protein-like (RQ7953)

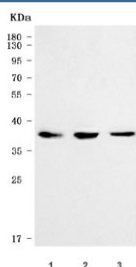
Catalog No.	Formulation	Size
RQ7953	0.5mg/ml if reconstituted with 0.2ml sterile DI water	100 ug

**Bulk quote request**

<b>Availability</b>	1-3 business days
<b>Species Reactivity</b>	Human
<b>Format</b>	Antigen affinity purified
<b>Clonality</b>	Polyclonal (rabbit origin)
<b>Isotype</b>	Rabbit IgG
<b>Purity</b>	Antigen affinity purified
<b>Buffer</b>	Lyophilized from 1X PBS with 2% Trehalose
<b>UniProt</b>	Q8N434
<b>Applications</b>	Western Blot : 0.5-1ug/ml Flow Cytometry : 1-3ug/million cells Direct ELISA : 0.1-0.5ug/ml
<b>Limitations</b>	This SVOPL antibody is available for research use only.



Flow cytometry testing of human HEL cells with SVOPL antibody at 1ug/million cells (blocked with goat sera); Red=cells alone, Green=isotype control, Blue= SVOPL antibody.



Western blot testing of human 1) T-47D, 2) RT4 and 3) MOLT4 cell lysate with SVOPL antibody. Predicted molecular weight ~37 kDa and ~54 kDa (two isoforms).

## Description

The protein encoded by this gene is thought to be a member of solute carrier family 22, which includes transmembrane proteins that transport toxins and drugs from the body. This gene is a paralog of the SVOP gene that encodes synaptic vesicle 2-related protein.

## Application Notes

Optimal dilution of the SVOPL antibody should be determined by the researcher.

## Immunogen

E. coli-derived recombinant human protein (amino acids M1-Q451) was used as the immunogen for the SVOPL antibody.

## Storage

After reconstitution, the SVOPL antibody can be stored for up to one month at 4°C. For long-term, aliquot and store at -20°C. Avoid repeated freezing and thawing.