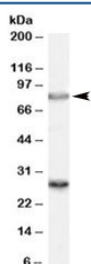


## SV2A Antibody (R36311)

| Catalog No.  | Formulation   | Size   |
|--------------|---|--------|
| R36311-100UG | 0.5 mg/ml in 1X TBS, pH7.3, with 0.5% BSA (US sourced) and 0.02% sodium azide | 100 ug |

[Bulk quote request](#)

|                      |  |
|----------------------|--|
| Availability         | 1-3 business days  |
| Species Reactivity   | Human, Mouse, Rat  |
| Predicted Reactivity | Cow, Dog, Pig  |
| Format               | Antigen affinity purified                                  |
| Clonality            | Polyclonal (goat origin)                                   |
| Isotype              | Goat Ig  |
| Purity               | Antigen affinity   |
| Gene ID              | 9900   |
| Applications         | Western Blot : 0.3-1ug/ml<br>ELISA (peptide) LOD : 1:64000 |
| Limitations          | This SV2A antibody is available for research use only.     |



Western blot testing of rat brain lysate with SV2A antibody at 0.3ug/ml. Predicted molecular weight (rat): ~83kDa. Both observed bands are blocked by addition of the immunizing peptide.

## Description

Additional name(s) for this target protein: Synaptic vesicle glycoprotein 2A

## Application Notes

Optimal dilution of the SV2A antibody should be determined by the researcher.

## Immunogen

Amino acids TVELYPSDKRTTA were used as the immunogen for this SV2A antibody.

## **Storage**

Aliquot and store the SV2A antibody at -20oC.