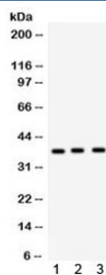


Surfactant protein D Antibody (R32075)

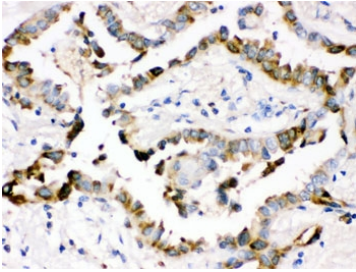
Catalog No.	Formulation	Size
R32075	0.5mg/ml if reconstituted with 0.2ml sterile DI water	100 ug

[Bulk quote request](#)

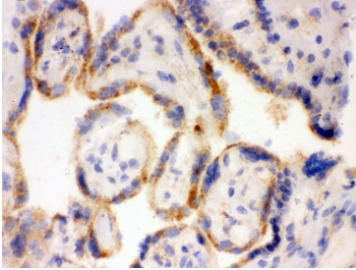
Availability	1-3 business days
Species Reactivity	Human, Rat
Format	Antigen affinity purified
Host	Rabbit
Clonality	Polyclonal (rabbit origin)
Isotype	Rabbit IgG
Purity	Antigen affinity
Buffer	Lyophilized from 1X PBS with 2.5% BSA, 0.025% sodium azide
UniProt	P35247
Localization	Cytoplasmic, membrane
Applications	Western Blot : 0.1-0.5ug/ml IHC (FFPE) : 0.5-1ug/ml IHC (Frozen) : 0.5-1ug/ml ICC (FFPE) : 0.5-1ug/ml ELISA : 0.1-0.5ug/ml (human protein tested); request BSA-free format for coating
Limitations	This Surfactant protein D antibody is available for research use only.



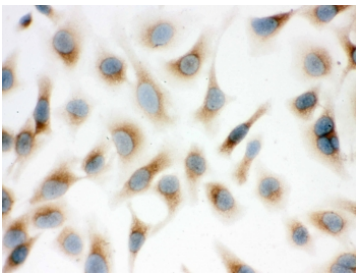
Western blot testing of 1) rat lung, 2) rat brain and 3) human PANC lysate with Surfactant protein D antibody. Predicted/observed molecular weight ~38 kDa.



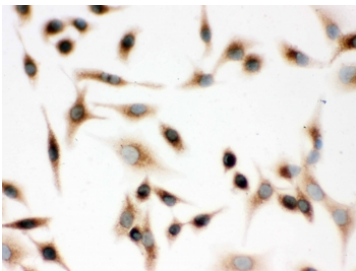
IHC testing of FFPE human lung cancer tissue with Surfactant protein D antibody. HIER: Boil the paraffin sections in pH 6, 10mM citrate buffer for 20 minutes and allow to cool prior to staining.



IHC testing of frozen human placental tissue with Surfactant protein D antibody.



ICC testing of FFPE human HeLa cells with Surfactant protein D antibody. HIER: Boil the paraffin sections in pH 6, 10mM citrate buffer for 20 minutes and allow to cool prior to staining.



ICC testing of FFPE human A549 cells with Surfactant protein D antibody. HIER: Boil the paraffin sections in pH 6, 10mM citrate buffer for 20 minutes and allow to cool prior to staining.

Description

Surfactant, pulmonary-associated protein D, also known as SFTPD or SP-D, is a protein which in humans is encoded by the SFTPD gene. It is mapped to 10q22.2-q23.1. The protein encoded by this gene is part of the innate immune response, protecting the lungs against inhaled microorganisms and chemicals. The encoded protein may also be involved in surfactant metabolism.

Application Notes

Optimal dilution of the Surfactant protein D antibody should be determined by the researcher.

Immunogen

Amino acids RSAENAALQQLVVAKNEAFLSMTD SKTE of human Surfactant protein D were used as the immunogen for the Surfactant protein D antibody.

Storage

After reconstitution, the Surfactant protein D antibody can be stored for up to one month at 4°C. For long-term, aliquot and store at -20°C. Avoid repeated freezing and thawing.

