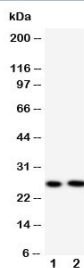


## Surfactant Protein A Antibody (R30530)

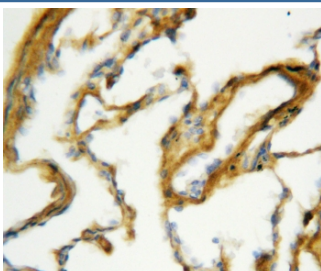
Catalog No.	Formulation	Size
R30530	0.5mg/ml if reconstituted with 0.2ml sterile DI water	100 ug

[Bulk quote request](#)

<b>Availability</b>	1-3 business days
<b>Species Reactivity</b>	Mouse, Rat
<b>Format</b>	Antigen affinity purified
<b>Clonality</b>	Polyclonal (rabbit origin)
<b>Isotype</b>	Rabbit IgG
<b>Purity</b>	Antigen affinity
<b>Buffer</b>	Lyophilized from 1X PBS with 2.5% BSA and 0.025% sodium azide/thimerosal
<b>UniProt</b>	P35242
<b>Applications</b>	Western Blot : 0.5-1ug/ml IHC (FFPE) : 0.5-1ug/ml
<b>Limitations</b>	This Surfactant Protein A antibody is available for research use only.



Western blot testing of Surfactant protein A antibody and Lane 1: mouse lung; 2: rat lung tissue lysate. Predicted molecular weight: ~26 kDa but may be observed at higher molecular weights due to glycosylation.



IHC-P: Surfactant protein A antibody testing of rat lung tissue. HIER: steamed with pH6 citrate buffer.

## Description

Surfactant protein A is an innate immune system collectin. The gene encoding SP-A map to mouse chromosome 14. Surfactant protein-A, which plays a role in innate host defense in the lung, is also expressed in the Eustachian tube. We report that the frequency of specific surfactant protein-A haplotypes and genotypes differs between children with recurrent otitis media compared with a control population.

## Application Notes

The stated application concentrations are suggested starting amounts. Titration of the Surfactant Protein A antibody may be required due to differences in protocols and secondary/substrate sensitivity.

## Immunogen

An amino acid sequence from the C-terminus of mouse Surfactant Protein A (WNDKGCLQYRLAICEF) was used as the immunogen for this Surfactant Protein A antibody (100% rat homology).

## Storage

After reconstitution, the Surfactant Protein A antibody can be stored for up to one month at 4oC. For long-term, aliquot and store at -20oC. Avoid repeated freezing and thawing.