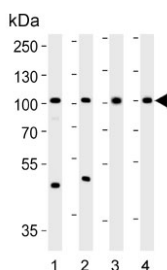


SUPV3L1 Antibody (F55042)

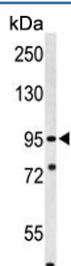
Catalog No.	Formulation	Size
F55042-0.4ML	In 1X PBS, pH 7.4, with 0.09% sodium azide	0.4 ml
F55042-0.08ML	In 1X PBS, pH 7.4, with 0.09% sodium azide	0.08 ml

[Bulk quote request](#)

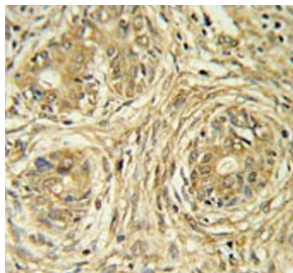
Availability	1-3 business days
Species Reactivity	Human, Mouse, Rat
Format	Purified
Clonality	Polyclonal (rabbit origin)
Isotype	Rabbit Ig
Purity	Antigen affinity purified
UniProt	Q8IYB8
Localization	Cytoplasmic, nuclear
Applications	Western Blot : 1:500-1:1000 Flow Cytometry : 1:10-1:50 (1x10e6 cells) Immunohistochemistry (FFPE) : 1:50-1:100
Limitations	This SUPV3L1 antibody is available for research use only.



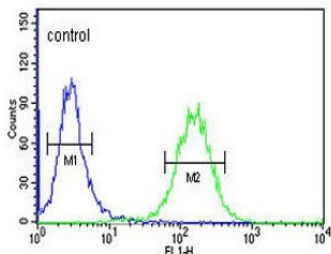
Western blot testing of 1) human SW620, 2) human PC-3, 3) mouse kidney and 4) rat kidney lysate with SUPV3L1 antibody. Predicted molecular weight ~88 kDa.



Western blot testing of human K562 cell lysate with SUPV3L1 antibody. Predicted molecular weight ~88 kDa.



IHC testing of FFPE human prostate cancer tissue with SUPV3L1 antibody. HIER: steam section in pH6 citrate buffer for 20 min and allow to cool prior to staining.



Flow cytometry testing of human K562 cells with SUPV3L1 antibody; Blue=isotype control, Green= SUPV3L1 antibody.

Description

SUPV3L1 is an ATPase and DNA/RNA helicase able to unwind DNA/DNA, DNA/RNA and RNA/RNA duplexes in the 5'-3' direction. It may protect cells from apoptosis.

Application Notes

The stated application concentrations are suggested starting points. Titration of the SUPV3L1 antibody may be required due to differences in protocols and secondary/substrate sensitivity.

Immunogen

A portion of amino acids 93-121 from the human protein was used as the immunogen for the SUPV3L1 antibody.

Storage

Aliquot the SUPV3L1 antibody and store frozen at -20°C or colder. Avoid repeated freeze-thaw cycles.