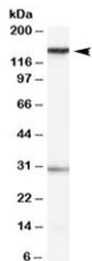


SUPT16H Antibody (R33545)

Catalog No.	Formulation	Size
R33545-100UG	0.5 mg/ml in 1X TBS, pH7.3, with 0.5% BSA (US sourced) and 0.02% sodium azide	100 ug

[Bulk quote request](#)

Availability	1-3 business days
Species Reactivity	Human
Predicted Reactivity	Cow, Mouse, Pig
Format	Antigen affinity purified
Host	Goat
Clonality	Polyclonal (goat origin)
Isotype	Goat Ig
Purity	Antigen affinity
Gene ID	11198
Applications	Western Blot : 0.1-0.3ug/ml ELISA (peptide) LOD : 1:8000
Limitations	This SUPT16H antibody is available for research use only.



Western blot testing of HeLa cell lysate with SUPT16H antibody at 0.1ug/ml. Predicted molecular weight: ~120 kDa, routinely observed between 140~150 kDa. Both observed bands are blocked by addition of immunizing peptide.

Description

Additional name(s) for this target protein: Suppressor of Ty 16 homolog

Application Notes

Optimal dilution of the SUPT16H antibody should be determined by the researcher.

Immunogen

Amino acids DLTNKEGKKPEEK were used as the immunogen for this SUPT16H antibody.

Storage

Aliquot and store the SUPT16H antibody at -20oC.