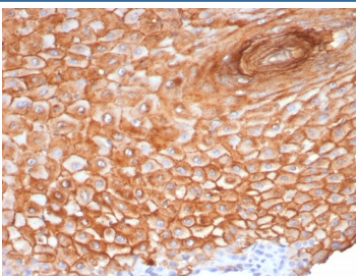


## Suprabasin Antibody / SBSN [clone SBSN/7965] (V4618)

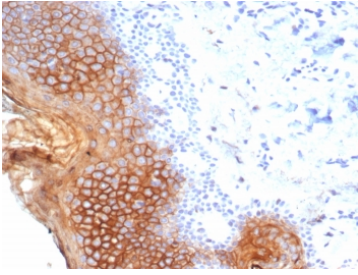
Catalog No.	Formulation	Size
V4618-100UG	0.2 mg/ml in 1X PBS with 0.1 mg/ml BSA (US sourced), 0.05% sodium azide	100 ug
V4618-20UG	0.2 mg/ml in 1X PBS with 0.1 mg/ml BSA (US sourced), 0.05% sodium azide	20 ug
V4618SAF-100UG	1 mg/ml in 1X PBS; BSA free, sodium azide free	100 ug

### Bulk quote request

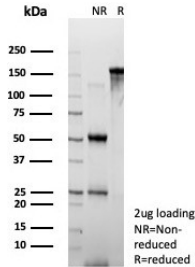
<b>Availability</b>	1-3 business days
<b>Species Reactivity</b>	Human
<b>Format</b>	Purified
<b>Host</b>	Mouse
<b>Clonality</b>	Monoclonal (mouse origin)
<b>Isotype</b>	Mouse IgG1, kappa
<b>Clone Name</b>	SBSN/7965
<b>Purity</b>	Protein A/G affinity
<b>UniProt</b>	Q6UWP8
<b>Localization</b>	Cytoplasm, Secreted
<b>Applications</b>	Immunohistochemistry (FFPE) : 1-2ug/ml for 30 min at RT
<b>Limitations</b>	This Suprabasin antibody is available for research use only.



IHC staining of FFPE human skin tissue with Suprabasin antibody (clone SBSN/7965).  
 HIER: boil tissue sections in pH 9 10mM Tris with 1mM EDTA for 20 min and allow to cool before testing.



IHC staining of FFPE human esophagus tissue with Suprabasin antibody (clone SBSN/7965). HIER: boil tissue sections in pH 9 10mM Tris with 1mM EDTA for 20 min and allow to cool before testing.



SDS-PAGE analysis of purified, BSA-free Suprabasin antibody (clone SBSN/7965) as confirmation of integrity and purity.

## Description

Suprabasin (SBSN) is a 247 amino acid secreted protein that is upregulated in differentiating keratinocytes and is thought to play a role in epidermal differentiation.

## Application Notes

Optimal dilution of the Suprabasin antibody should be determined by the researcher.

## Immunogen

A recombinant fragment of the human protein was used as the immunogen for the Suprabasin antibody.

## Storage

Aliquot the Suprabasin antibody and store frozen at -20oC or colder. Avoid repeated freeze-thaw cycles.