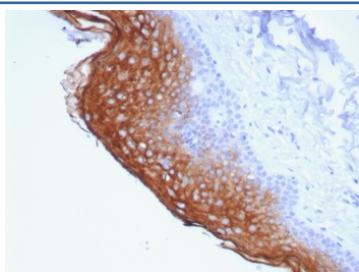


Suprabasin Antibody / SBSN [clone SBSN/7964] (V4623)

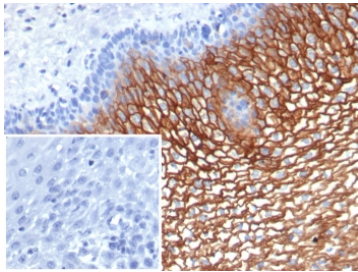
Catalog No.	Formulation	Size
V4623-100UG	0.2 mg/ml in 1X PBS with 0.1 mg/ml BSA (US sourced), 0.05% sodium azide	100 ug
V4623-20UG	0.2 mg/ml in 1X PBS with 0.1 mg/ml BSA (US sourced), 0.05% sodium azide	20 ug
V4623SAF-100UG	1 mg/ml in 1X PBS; BSA free, sodium azide free	100 ug

Bulk quote request

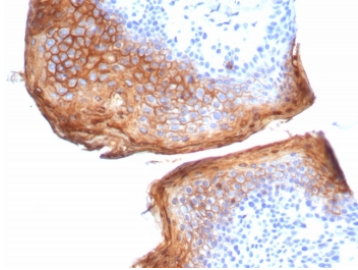
Availability	1-3 business days
Species Reactivity	Human
Format	Purified
Clonality	Monoclonal (mouse origin)
Isotype	Mouse IgG
Clone Name	SBSN/7964
Purity	Protein A/G affinity
UniProt	Q6UWP8
Localization	Cytoplasm, Secreted
Applications	Immunohistochemistry (FFPE) : 1-2ug/ml for 30 min at RT
Limitations	This Suprabasin antibody is available for research use only.



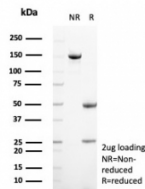
IHC staining of FFPE human skin tissue with Suprabasin antibody (clone SBSN/7964).
 HIER: boil tissue sections in pH 9 10mM Tris with 1mM EDTA for 20 min and allow to cool before testing.



IHC staining of FFPE human esophagus tissue with Suprabasin antibody (clone SBSN/7964). Inset: PBS used in place of primary Ab (secondary Ab negative control).
HIER: boil tissue sections in pH 9 10mM Tris with 1mM EDTA for 20 min and allow to cool before testing.



IHC staining of FFPE human skin tissue with Suprabasin antibody (clone SBSN/7964).
HIER: boil tissue sections in pH 9 10mM Tris with 1mM EDTA for 20 min and allow to cool before testing.



SDS-PAGE analysis of purified, BSA-free Suprabasin antibody (clone SBSN/7964) as confirmation of integrity and purity.

Description

Suprabasin (SBSN) is a 247 amino acid secreted protein that is upregulated in differentiating keratinocytes and is thought to play a role in epidermal differentiation. Expressed in uterus, skin, thymus and esophagus, suprabasin is encoded by a gene that maps to human chromosome 19q13.12. Chromosome 19 consists of about 63 million bases with over 1,400 genes, making up over 2% of human genomic DNA. Chromosome 19 is the genetic home for a number of immunoglobulin superfamily members, including the killer cell and leukocyte Ig-like receptors, a number of ICAMs, the CEACAM and PSG families, and Fcγ receptors. Key genes for eye color and hair color also map to chromosome 19. Peutz-Jeghers syndrome, spinocerebellar ataxia type 6, the stroke disorder CADASIL, hypercholesterolemia and Insulin-dependent diabetes have been linked to chromosome 19.

Application Notes

Optimal dilution of the Suprabasin antibody should be determined by the researcher.

Immunogen

A recombinant fragment of the human protein was used as the immunogen for the Suprabasin antibody.

Storage

Aliquot the Suprabasin antibody and store frozen at -20°C or colder. Avoid repeated freeze-thaw cycles.

