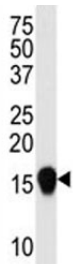


SUMO4 Antibody (V55 Mutant) (F42359)

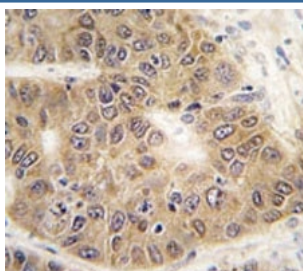
Catalog No.	Formulation	Size
F42359-0.4ML	In 1X PBS, pH 7.4, with 0.09% sodium azide	0.4 ml
F42359-0.08ML	In 1X PBS, pH 7.4, with 0.09% sodium azide	0.08 ml

[Bulk quote request](#)

Availability	1-3 business days
Species Reactivity	Human
Format	Antigen affinity purified
Clonality	Polyclonal (rabbit origin)
Isotype	Rabbit Ig
Purity	Purified
UniProt	Q6EEV6
Applications	Western Blot : 1:1000 IHC (Paraffin) : 1:50-1:100
Limitations	This SUMO4 antibody is available for research use only.



Western blot analysis of SUMO4 antibody (V55 Mutant) in HepG2 lysate. Observed molecular weight: 11-15 kDa.



IHC analysis of FFPE human hepatocarcinoma tissue stained with SUMO4 antibody

Description

SUMO4 is a member of the SUMO gene family. This family of small ubiquitin-related modifiers covalently modify target lysines in proteins and control the target proteins' subcellular localization, stability, or activity. Upon oxidative stress, SUMO4 conjugates to various anti-oxidant enzymes, chaperones, and stress defense proteins. This protein may also conjugate to NFKBIA, TFAP2A and FOS, negatively regulating their transcriptional activity, and to NR3C1, positively regulating its transcriptional activity. Covalent attachment to SUMO4 substrates requires prior activation by the E1 complex SAE1-SAE2 and linkage to the E2 enzyme UBE2I. In contrast to SUMO1, SUMO2 and SUMO3, SUMO4 seems to be insensitive to sentrin-specific proteases due to the presence of Pro-90. This may impair processing to mature form and conjugation to substrates. SUMO4 is located in the cytoplasm and specifically modifies IKBA, leading to negative regulation of NF-kappa-B-dependent transcription of the IL12B gene. The M55V substitution has been associated with type I diabetes.

Application Notes

Titration of the SUMO4 antibody may be required due to differences in protocols and secondary/substrate sensitivity.

Immunogen

This SUMO4 antibody was produced from rabbits immunized with a KLH conjugated peptide CEPRGLS(V)KQIRFRFG selected from human SUMO4. This antibody is affinity purified using peptides CEPRGLS(V)KQIRFRFG (positive selection) and CEPRGLS(M)KQIRFRFG (negative selection).

Storage

Aliquot the SUMO4 antibody and store frozen at -20oC or colder. Avoid repeated freeze-thaw cycles.