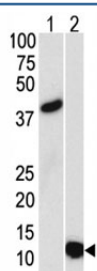


## SUMO3 Antibody [clone 76AT630.91.31] (F40205)

Catalog No.	Formulation	Size
F40205-0.4ML	In 1X PBS, pH 7.4, with 0.09% sodium azide	0.4 ml
F40205-0.08ML	In 1X PBS, pH 7.4, with 0.09% sodium azide	0.08 ml

[Bulk quote request](#)

<b>Availability</b>	1-3 business days
<b>Species Reactivity</b>	Human
<b>Format</b>	Purified
<b>Clonality</b>	Monoclonal (mouse origin)
<b>Isotype</b>	Mouse IgG1
<b>Clone Name</b>	76AT630.91.31
<b>Purity</b>	Purified
<b>UniProt</b>	P55854
<b>Applications</b>	Western Blot : 1:100-1:500
<b>Limitations</b>	This SUMO3 antibody is available for research use only.



Western blot analysis of SUMO3 antibody and (1) GST-SUMO3 recombinant protein and (2) HL-60 lysate.

## Description

SUMO proteins, such as SUMO3, and ubiquitin posttranslationally modify numerous cellular proteins and affect their metabolism and function. However, unlike ubiquitination, which targets proteins for degradation, sumoylation participates in a number of cellular processes, such as nuclear transport, transcriptional regulation, apoptosis, and protein stability.

## Application Notes

Titration of the SUMO3 antibody may be required due to differences in protocols and secondary/substrate sensitivity.

## **Immunogen**

Purified recombinant protein was used as immunogen for this SUMO3 antibody.

## **Storage**

Aliquot the SUMO3 antibody and store frozen at -20oC or colder. Avoid repeated freeze-thaw cycles.