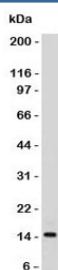


SUMO2/3 Antibody [clone S23MT-1] (V7091)

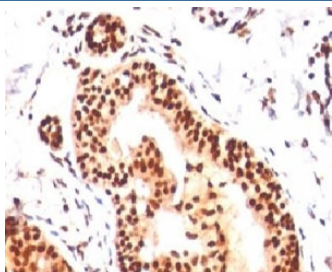
Catalog No.	Formulation	Size
V7091-100UG	0.2 mg/ml in 1X PBS with 0.1 mg/ml BSA (US sourced) and 0.05% sodium azide	100 ug
V7091-20UG	0.2 mg/ml in 1X PBS with 0.1 mg/ml BSA (US sourced) and 0.05% sodium azide	20 ug
V7091SAF-100UG	1 mg/ml in 1X PBS; BSA free, sodium azide free	100 ug
V7091IHC-7ML	Prediluted in 1X PBS with 0.1 mg/ml BSA (US sourced) and 0.05% sodium azide; *For IHC use only*	7 ml

[Bulk quote request](#)

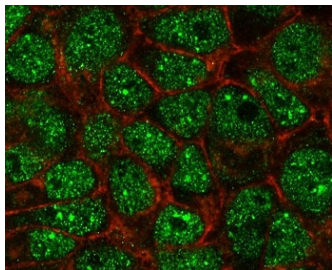
Species Reactivity	Human
Format	Purified
Clonality	Monoclonal (mouse origin)
Isotype	Mouse IgG1, kappa
Clone Name	S23MT-1
Purity	Protein G purified
Gene ID	6613, 6612
Localization	Predominantly nuclear with some cytoplasmic staining
Applications	Immunofluorescence : 1-2ug/ml Western Blot : 1-2ug/ml Immunohistochemistry (FFPE) : 1-2ug/ml for 30 min at RT Prediluted IHC Only Format : incubate for 30 min at RT (1)
Limitations	This SUMO2/3 antibody is available for research use only.



Western blot testing of human HeLa lysate with SUMO2/3 antibody (clone S23MT-1).



IHC analysis of human tonsil with SUMO2/3 antibody (clone S23MT-1). Required HIER: boil tissue sections in pH 9 10mM Tris with 1mM EDTA for 10-20 min.



Immunofluorescent testing of PFA-fixed human MCF7 cells with SUMO2/3 antibody (green, clone S23MT-1) and Phalloidin (red).

Description

The small ubiquitin-related modifier (SUMO) proteins, which include SUMO1, 2 and 3, belong to the ubiquitin-like protein family. SUMO proteins are synthesized as precursors that undergo processing before conjugation to target proteins. Sumoylation targets for a variety of cellular processing, including nuclear transport, transcriptional regulation, apoptosis and protein stability. SUMO2/3 contribute to a greater percentage of protein modification than does SUMO1 and they can form polymeric chains. In addition, SUMO3 regulates beta-Amyloid generation and may be critical in the onset or progression of Alzheimer's disease.

Application Notes

Immunogen

Recombinant human SUMO2 protein was used as the immunogen for this SUMO2/3 antibody. This antibody reacts with both SUMO2 and SUMO3.

Storage

Store the SUMO2/3 antibody at 2-8°C (with azide) or aliquot and store at -20°C or colder (without azide).