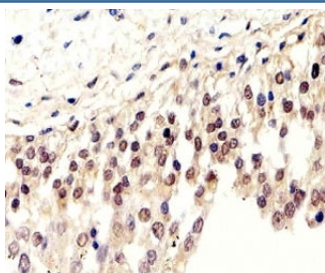


SUMO2/3 Antibody (F42562)

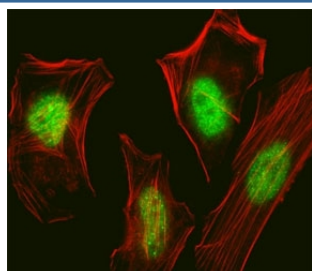
Catalog No.	Formulation	Size
F42562-0.4ML	In 1X PBS, pH 7.4, with 0.09% sodium azide	0.4 ml
F42562-0.08ML	In 1X PBS, pH 7.4, with 0.09% sodium azide	0.08 ml

[Bulk quote request](#)

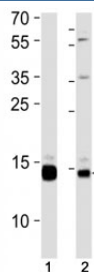
Availability	1-3 business days
Species Reactivity	Human, Rat
Format	Purified
Clonality	Polyclonal (rabbit origin)
Isotype	Rabbit Ig
Purity	Purified
UniProt	P55854
Applications	Immunofluorescence : 1:10-1:50 IHC (Paraffin) : 1:50-1:100 Western Blot : 1:1000
Limitations	This SUMO2/3 antibody is available for research use only.



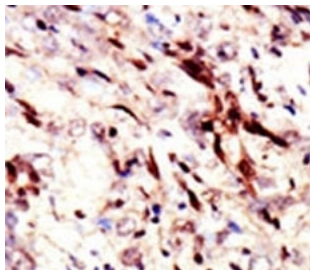
IHC analysis of FFPE human bladder section using SUMO2/3 antibody; Ab was diluted at 1:100.



Fluorescent confocal image of HeLa cell stained with SUMO2/3 antibody. HeLa cells were fixed with 4% PFA (20 min), permeabilized with Triton X-100 (0.1%, 10 min), then incubated with primary Ab (1:25, 1 h at 37oC). For secondary Ab, Alexa Fluor 488 conjugated donkey anti-rabbit Ab (green) was used (1:400, 50 min at 37oC). Cytoplasmic actin was counterstained with Alexa Fluor 555 (red) conjugated Phalloidin (7units/ml, 1 h at 37oC). Nuclei were counterstained with DAPI (blue) (10 ug/ml, 10 min). immunoreactivity is localized to the nucleus.



SUMO2/3 antibody western blot analysis in (1) 293 cell line and (2) rat liver tissue lysate. Observed molecular weight: 12-15 kDa.



IHC analysis of FFPE human hepatocarcinoma tissue stained with the SUMO2/3 antibody

Description

Covalent modification of target lysines by SUMO (small ubiquitin-like modifier) modulates processes such as protein localization, transcription, nuclear transport, mitosis, DNA replication and repair, signal transduction, and viral reproduction. SUMO does not seem to be involved in protein degradation and may in fact function as an antagonist of ubiquitin in the degradation process. The SUMO family consists of SUMO1 and closely related homologs SUMO2, SUMO3, and SUMO4. Sumoylation has been shown to regulate a wide range of proteins, including MDM2, PIAS, PML, RanGAP1, RanBP2, p53, p73, HIPK2, TEL, c-Jun, Fas, Daxx, TNFRI, Topo-I, Topo-II, PARK2, WRN, Sp100, IκB-α, Androgen receptor (AR), GLUT1/4, CaMK, DNMT3B, TDG, HIF1A, CHD3, EXOSC9, RAD51, and viral targets such as CMV-IE1/2, EBV-BZLF1, and HPV/BPV-E1.

Application Notes

Titration of the SUMO2/3 antibody may be required due to differences in protocols and secondary/substrate sensitivity.

Immunogen

This SUMO2/3 antibody recognizes SUMO2 and SUMO3. It was produced from rabbits immunized with a recombinant protein encoding full length human SUMO3.

Storage

Aliquot the SUMO2/3 antibody and store frozen at -20°C or colder. Avoid repeated freeze-thaw cycles.