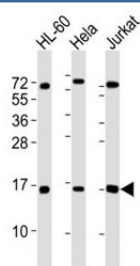


## SUMO1 Antibody [clone 66AT1273.94] (F40203)

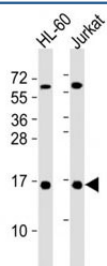
Catalog No.	Formulation	Size
F40203-0.4ML	In 1X PBS, pH 7.4, with 0.09% sodium azide	0.4 ml
F40203-0.08ML	In 1X PBS, pH 7.4, with 0.09% sodium azide	0.08 ml

[Bulk quote request](#)

<b>Availability</b>	1-3 business days
<b>Species Reactivity</b>	Human
<b>Format</b>	Purified
<b>Clonality</b>	Monoclonal (mouse origin)
<b>Isotype</b>	Mouse IgG1
<b>Clone Name</b>	66AT1273.94
<b>Purity</b>	Purified
<b>UniProt</b>	P63165
<b>Applications</b>	Western Blot : 1:100-4000
<b>Limitations</b>	This SUMO1 antibody is available for research use only.



Western blot testing of SUMO1 antibody at 1:4000 dilution. Lane 1: HL-60 lysate; 2: HeLa lysate; 3: Jurkat lysate. Predicted molecular weight: 12-15 kDa



Western blot testing of SUMO1 antibody at 1:4000 dilution. Lane 1: HL-60 lysate; 2: Jurkat lysate

## Description

This gene encodes a protein that is a member of the SUMO (small ubiquitin-like modifier) protein family. It functions in a manner similar to ubiquitin in that it is bound to target proteins as part of a post-translational modification system. However, unlike ubiquitin which targets proteins for degradation, this protein is involved in a variety of cellular processes, such as nuclear transport, transcriptional regulation, apoptosis, and protein stability. It is not active until the last four amino acids of the carboxy-terminus have been cleaved off. Several pseudogenes have been reported for this gene. Alternate transcriptional splice variants encoding different isoforms have been characterized.

## Application Notes

Titration of the SUMO1 antibody may be required due to differences in protocols and secondary/substrate sensitivity.

## Immunogen

Purified recombinant protein was used as immunogen for this SUMO1 antibody.

## Storage

Aliquot the SUMO1 antibody and store frozen at -20oC or colder. Avoid repeated freeze-thaw cycles.