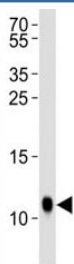


SUMO Antibody (F40023)

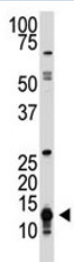
Catalog No.	Formulation	Size
F40023-0.4ML	In 1X PBS, pH 7.4, with 0.09% sodium azide	0.4 ml
F40023-0.08ML	In 1X PBS, pH 7.4, with 0.09% sodium azide	0.08 ml

[Bulk quote request](#)

Availability	1-3 business days
Species Reactivity	Human, Drosophila
Format	Purified
Host	Rabbit
Clonality	Polyclonal (rabbit origin)
Isotype	Rabbit Ig
Purity	Purified
UniProt	O97102
Applications	Western Blot : 1:1000
Limitations	This SUMO antibody is available for research use only.



Western blot analysis of lysate from Drosophila tissue lysate using SUMO antibody diluted at 1:1000.



The SUMO1 antibody used in western blot to detect SUMO1 in human HL-60 cell lysate

Description

Covalent modification of target lysines by SUMO (small ubiquitin-like modifier) modulates processes such as protein localization, transcription, nuclear transport, mitosis, DNA replication and repair, signal transduction, and viral reproduction. SUMO does not seem to be involved in protein degradation and may in fact function as an antagonist of ubiquitin in the degradation process. In the development of *Drosophila*, SUMO plays a maternal role in anterior-posterior (A/P) polarity and patterning.

Application Notes

Titration of the SUMO antibody may be required due to differences in protocols and secondary/substrate sensitivity.

Immunogen

A portion of amino acids 37-66 from the drome protein was used as the immunogen for this SUMO antibody.

Storage

Aliquot the SUMO antibody and store frozen at -20oC or colder. Avoid repeated freeze-thaw cycles.