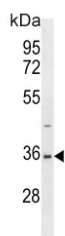


SUMO-activating enzyme subunit 1 Antibody / SAE1 (F54771)

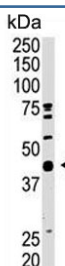
Catalog No.	Formulation	Size
F54771-0.4ML	In 1X PBS, pH 7.4, with 0.09% sodium azide	0.4 ml
F54771-0.08ML	In 1X PBS, pH 7.4, with 0.09% sodium azide	0.08 ml

[Bulk quote request](#)

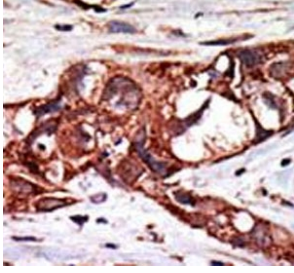
Availability	1-3 business days
Species Reactivity	Human, Mouse
Format	Purified
Host	Rabbit
Clonality	Polyclonal (rabbit origin)
Isotype	Rabbit Ig
Purity	Antigen affinity purified
UniProt	Q9UBE0
Localization	Nuclear, cytoplasmic
Applications	Western Blot : 1:500-1:1000 Immunohistochemistry (FFPE) : 1:25
Limitations	This SUMO-activating enzyme subunit 1 antibody is available for research use only.



Western blot testing of human HEK293 cell lysate with SUMO-activating enzyme subunit 1 antibody. Predicted molecular weight ~38 kDa.



Western blot testing of mouse heart tissue lysate with SUMO-activating enzyme subunit 1 antibody. Predicted molecular weight ~38 kDa.



IHC testing of FFPE human breast cancer tissue with SUMO-activating enzyme subunit 1 antibody. HIER: steam section in pH6 citrate buffer for 20 min and allow to cool prior to staining.

Description

The dimeric enzyme AOS1 acts as a an E1 ligase for SUMO1, SUMO2, SUMO3, and probably SUMO4. It mediates ATP-dependent activation of SUMO proteins and formation of a thioester with a conserved cysteine residue on SAE2.

Application Notes

The stated application concentrations are suggested starting points. Titration of the SUMO-activating enzyme subunit 1 antibody may be required due to differences in protocols and secondary/substrate sensitivity.

Immunogen

A portion of amino acids 300-329 from the human protein was used as the immunogen for the SUMO-activating enzyme subunit 1 antibody.

Storage

Aliquot the SUMO-activating enzyme subunit 1 antibody and store frozen at -20oC or colder. Avoid repeated freeze-thaw cycles.