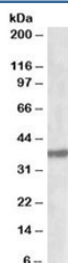


SUMF1 Antibody (R34022)

Catalog No.	Formulation	Size
R34022-100UG	0.5 mg/ml in 1X TBS, pH7.3, with 0.5% BSA (US sourced) and 0.02% sodium azide	100 ug

[Bulk quote request](#)

Availability	1-3 business days
Species Reactivity	Human, Mouse
Predicted Reactivity	Cow, Dog, Rat
Format	Antigen affinity purified
Host	Goat
Clonality	Polyclonal (goat origin)
Isotype	Goat Ig
Purity	Antigen affinity
Gene ID	285362
Applications	Western Blot : 0.5-2ug/ml ELISA (peptide) LOD : 1:16000
Limitations	This SUMF1 antibody is available for research use only.



Western blot testing of mouse pancreas lysate with SUMF1 antibody at 1ug/ml.
Predicted molecular weight: ~40kDa.

Description

Additional name(s) for this target protein: Sulfatase modifying factor 1

Application Notes

Optimal dilution of the SUMF1 antibody should be determined by the researcher.

Immunogen

Amino acids ETLNPKGPPSGKDR were used as the immunogen for this SUMF1 antibody.

Storage

Aliquot and store the SUMF1 antibody at -20oC.