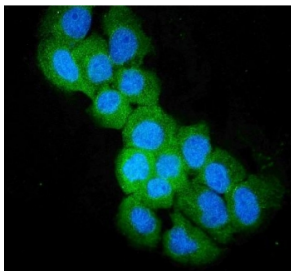


SULT2B1 Antibody (R31783)

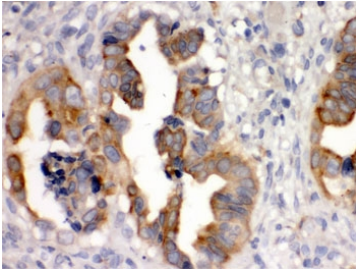
Catalog No.	Formulation	Size
R31783	0.5mg/ml if reconstituted with 0.2ml sterile DI water	100 ug

Bulk quote request

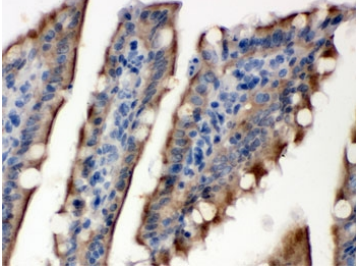
Availability	1-3 business days
Species Reactivity	Human, Rat
Format	Antigen affinity purified
Host	Rabbit
Clonality	Polyclonal (rabbit origin)
Isotype	Rabbit IgG
Purity	Antigen affinity
Buffer	Lyophilized from 1X PBS with 2.5% BSA and 0.025% sodium azide
UniProt	O00204
Localization	Cytoplasmic
Applications	Western Blot : 0.1-0.5ug/ml Immunohistochemistry (FFPE) : 0.5-1ug/ml Immunofluorescence (FFPE) : 2-4ug/ml Flow Cytometry : 1-3ug/million cells
Limitations	This SULT2B1 antibody is available for research use only.



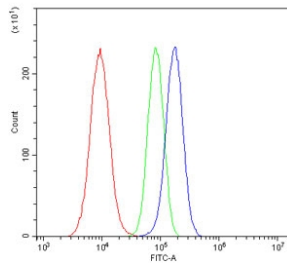
Immunofluorescent staining of FFPE human A431 cells with SULT2B1 antibody (green) and DAPI nuclear stain (blue). HIER: steam section in pH6 citrate buffer for 20 min.



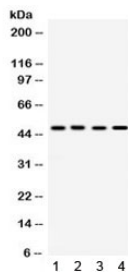
IHC testing of FFPE human intestinal cancer tissue with SULT2B1 antibody. HIER: Boil the paraffin sections in pH 6, 10mM citrate buffer for 20 minutes and allow to cool prior to staining.



IHC testing of FFPE rat intestine with SULT2B1 antibody. HIER: Boil the paraffin sections in pH 6, 10mM citrate buffer for 20 minutes and allow to cool prior to staining.



Flow cytometry testing of human A549 cells with SULT2B1 antibody at 1ug/million cells (blocked with goat sera); Red=cells alone, Green=isotype control, Blue= SULT2B1 antibody.



Western blot testing of 1) rat testis, 2) human A431, 3) human HeLa and 4) human MCF7 lysate with SULT2B1 antibody. Predicted molecular weight 39-41 kDa but routinely observed at 41-48 kDa.

Description

Sulfotransferase family cytosolic 2B member 1 is an enzyme that in humans is encoded by the SULT2B1 gene. Sulfotransferase enzymes catalyze the sulfate conjugation of many hormones, neurotransmitters, drugs, and xenobiotic compounds. These cytosolic enzymes are different in their tissue distributions and substrate specificities. The gene structure (number and length of exons) is similar among family members. And this gene sulfates dehydroepiandrosterone but not 4-nitrophenol, a typical substrate for the phenol and estrogen sulfotransferase subfamilies. Two alternatively spliced variants that encode different isoforms have been described.

Application Notes

Optimal dilution of the SULT2B1 antibody should be determined by the researcher.

Immunogen

Amino acids FDHIKGLRMKGKDNFLFITYEELQQDLQ of human SULT2B1 were used as the immunogen for the SULT2B1 antibody.

Storage

After reconstitution, the SULT2B1 antibody can be stored for up to one month at 4°C. For long-term, aliquot and store at -20°C. Avoid repeated freezing and thawing.

References (1)