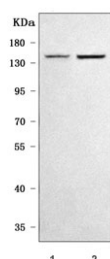


SULF2 Antibody / Extracellular sulfatase Sulf-2 (RQ7947)

| Catalog No. | Formulation | Size |
|-------------|---|--------|
| RQ7947 | 0.5mg/ml if reconstituted with 0.2ml sterile DI water | 100 ug |

Bulk quote request

| | |
|---------------------------|--|
| Availability | 1-3 business days |
| Species Reactivity | Human |
| Format | Antigen affinity purified |
| Clonality | Polyclonal (rabbit origin) |
| Isotype | Rabbit IgG |
| Purity | Antigen affinity purified |
| Buffer | Lyophilized from 1X PBS with 2% Trehalose |
| UniProt | Q8IWU5 |
| Applications | Western Blot : 0.5-1ug/ml Direct ELISA : 0.1-0.5ug/ml |
| Limitations | This SULF2 antibody is available for research use only. |



Western blot testing of human 1) MCF7 and 2) HepG2 cell lysate with SULF2 antibody. Predicted molecular weight ~100 kDa but may be observed at higher molecular weights due to glycosylation.

Description

Extracellular sulfatase Sulf-2 is an enzyme that in humans is encoded by the SULF2 gene. Heparan sulfate proteoglycans (HSPGs) act as coreceptors for numerous heparin-binding growth factors and cytokines and are involved in cell signaling. Heparan sulfate 6-O-endosulfatases, such as SULF2, selectively remove 6-O-sulfate groups from heparan sulfate. This activity modulates the effects of heparan sulfate by altering binding sites for signaling molecules

Application Notes

Optimal dilution of the SULF2 antibody should be determined by the researcher.

Immunogen

E. coli-derived recombinant human protein (amino acids K471-D614) was used as the immunogen for the SULF2 antibody.

Storage

After reconstitution, the SULF2 antibody can be stored for up to one month at 4°C. For long-term, aliquot and store at -20°C. Avoid repeated freezing and thawing.