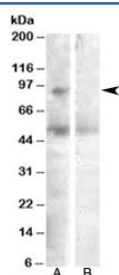


## SULF2 Antibody / Extracellular sulfatase Sulf-2 (R33461)

Catalog No.	Formulation	Size
R33461-100UG	0.5 mg/ml in 1X TBS, pH7.3, with 0.5% BSA (US sourced) and 0.02% sodium azide	100 ug

[Bulk quote request](#)

Availability	1-3 business days
Species Reactivity	Human
Format	Antigen affinity purified
Clonality	Polyclonal (goat origin)
Isotype	Goat Ig
Purity	Antigen affinity
Gene ID	55959
Applications	Western Blot : 0.3-1ug/ml ELISA (peptide) LOD : 1:8000
Limitations	This SULF2 antibody is available for research use only.



Western blot testing of human ovary lysate with SULF2 antibody at 0.3ug/ml with [B] and without [A] blocking/immunizing peptide. Predicted molecular weight: ~98kDa.

### Description

Additional name(s) for this target protein: Sulfatase 2

### Application Notes

Optimal dilution of the SULF2 antibody should be determined by the researcher.

### Immunogen

Amino acids DGRVYHVGLGDAAQPR were used as the immunogen for this SULF2 antibody.

## Storage

Aliquot and store the SULF2 antibody at -20oC.