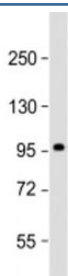


SULF1 Antibody / Sulfatase 1 (F53940)

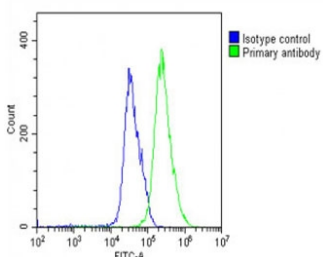
Catalog No.	Formulation	Size
F53940-0.2ML	In 1X PBS, pH 7.4, with 0.09% sodium azide	0.2 ml
F53940-0.05ML	In 1X PBS, pH 7.4, with 0.09% sodium azide	0.05 ml

[Bulk quote request](#)

Availability	1-3 business days
Species Reactivity	Human
Format	Antigen affinity purified
Clonality	Polyclonal (rabbit origin)
Isotype	Rabbit Ig
Purity	Antigen affinity
UniProt	Q8IWU6
Applications	Western Blot : 1:1000-2000 Flow Cytometry : 1:25/million cells
Limitations	This SULF1 antibody is available for research use only.



Western blot testing of human skeletal muscle lysate with SULF1 antibody at 1:2000. Predicted molecular weight: 101 kDa.



FACS testing of fixed and permeabilized human U-251 MG cells with SULF1 antibody at 1:25 dilution.

Description

Sulfatase 1 exhibits arylsulfatase activity and highly specific endoglucosamine-6-sulfatase activity. It can remove sulfate from the C-6 position of glucosamine within specific subregions of intact heparin. Diminishes HSPG (heparan sulfate proteoglycans) sulfation, inhibits signaling by heparin-dependent growth factors, diminishes proliferation, and facilitates apoptosis in response to exogenous stimulation.

Application Notes

Titration of the SULF1 antibody may be required due to differences in protocols and secondary/substrate sensitivity.

Immunogen

A portion of amino acids 704-738 from the human protein was used as the immunogen for the SULF1 antibody.

Storage

Aliquot the SULF1 antibody and store frozen at -20oC or colder. Avoid repeated freeze-thaw cycles.