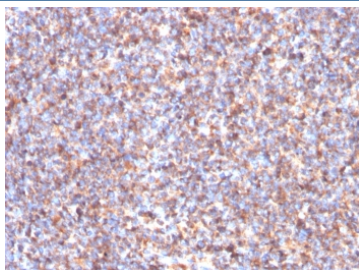


## Succinate dehydrogenase B Antibody / SDHB [clone SDHB/3204] (V4695)

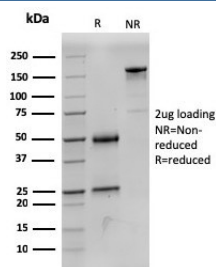
Catalog No.	Formulation	Size
V4695-100UG	0.2 mg/ml in 1X PBS with 0.1 mg/ml BSA (US sourced), 0.05% sodium azide	100 ug
V4695-20UG	0.2 mg/ml in 1X PBS with 0.1 mg/ml BSA (US sourced), 0.05% sodium azide	20 ug
V4695SAF-100UG	1 mg/ml in 1X PBS; BSA free, sodium azide free	100 ug

[Bulk quote request](#)

<b>Availability</b>	1-3 business days
<b>Species Reactivity</b>	Human
<b>Format</b>	Purified
<b>Host</b>	Mouse
<b>Clonality</b>	Monoclonal (mouse origin)
<b>Isotype</b>	Mouse IgG2, kappa
<b>Clone Name</b>	SDHB/3204
<b>Purity</b>	Protein A/G affinity
<b>UniProt</b>	P21912
<b>Localization</b>	Cytoplasm (Mitochondria)
<b>Applications</b>	Immunofluorescence : 1-2ug/ml Immunohistochemistry (FFPE) : 1-2ug/ml for 30 min at RT
<b>Limitations</b>	This Succinate dehydrogenase B antibody is available for research use only.



IHC staining of FFPE human tonsil tissue with Succinate dehydrogenase B antibody (clone SDHB/3204). HIER: boil tissue sections in pH 9 10mM Tris with 1mM EDTA for 20 min and allow to cool before testing.



SDS-PAGE analysis of purified, BSA-free Succinate dehydrogenase B antibody (clone SDHB/3204) as confirmation of integrity and purity.

## Description

Succinate dehydrogenase (SDH) is Complex II in the mitochondria, vital for mitochondrial electron transport, as well as Krebs cycle function. Four subunits comprise the SDH protein complex: a flavochrome subunit (SDHA), an iron-sulfur protein (SDHB) and two membrane-bound subunits (SDHC and SDHD) anchored to the inner mitochondrial membrane. The SDH complex functions as a tumor suppressor. Loss of any subunit proteins lead to destabilization of the complex and tumor formation. Antibody to SDHB is helpful in the identification of pheochromocytomas, paragangliomas and GIST.

## Application Notes

Optimal dilution of the Succinate dehydrogenase B antibody should be determined by the researcher.

## Immunogen

A recombinant human SDHB protein fragment (within amino acids 165-273) was used as the immunogen for the Succinate dehydrogenase B antibody.

## Storage

Aliquot the Succinate dehydrogenase B antibody and store frozen at -20oC or colder. Avoid repeated freeze-thaw cycles.