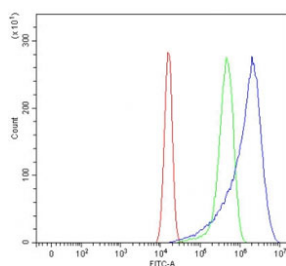


STX6 Antibody / Syntaxin 6 (RQ7806)

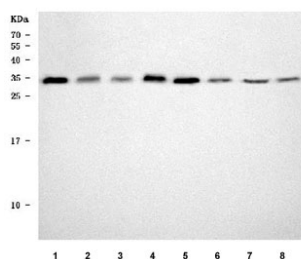
Catalog No.	Formulation	Size
RQ7806	0.5mg/ml if reconstituted with 0.2ml sterile DI water	100 ug

Bulk quote request

Availability	1-3 business days
Species Reactivity	Human, Mouse, Rat
Format	Antigen affinity purified
Clonality	Polyclonal (rabbit origin)
Isotype	Rabbit IgG
Purity	Antigen affinity purified
Buffer	Lyophilized from 1X PBS with 2% Trehalose
UniProt	O43752
Localization	Cytoplasmic, nuclear
Applications	Western Blot : 0.5-1ug/ml Flow Cytometry : 1-3ug/million cells Direct ELISA : 0.1-0.5ug/ml
Limitations	This STX6 antibody is available for research use only.



Flow cytometry testing of human U-2 OS cells with STX6 antibody at 1ug/million cells (blocked with goat sera); Red=cells alone, Green=isotype control, Blue= STX6 antibody.



Western blot testing of 1) human RT4, 2) human HaCaT, 3) human SH-SY5Y, 4) human T-47D, 5) rat brain, 6) rat PC-12, 7) mouse brain and 8) mouse Neuro-2a cell lysate with STX6 antibody. Predicted molecular weight ~29 kDa.

Description

Syntaxin-6 is a protein that in humans is encoded by the STX6 gene. Enables syntaxin binding activity. Involved in several processes, including Golgi ribbon formation; retrograde transport, endosome to Golgi; and vesicle fusion. Acts upstream of or within endocytic recycling. Located in several cellular components, including early endosome; perinuclear region of cytoplasm; and trans-Golgi network. Part of SNARE complex.

Application Notes

Optimal dilution of the STX6 antibody should be determined by the researcher.

Immunogen

E. coli-derived recombinant human protein (amino acids M1-A239) was used as the immunogen for the STX6 antibody.

Storage

After reconstitution, the STX6 antibody can be stored for up to one month at 4oC. For long-term, aliquot and store at -20oC. Avoid repeated freezing and thawing.