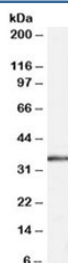


STUB1 Antibody (R33375)

Catalog No.	Formulation	Size
R33375-100UG	0.5 mg/ml in 1X TBS, pH7.3, with 0.5% BSA (US sourced) and 0.02% sodium azide	100 ug

[Bulk quote request](#)

Availability	1-3 business days
Species Reactivity	Human
Predicted Reactivity	Cow, Dog, Mouse, Rat
Format	Antigen affinity purified
Host	Goat
Clonality	Polyclonal (goat origin)
Isotype	Goat Ig
Purity	Antigen affinity
Gene ID	10273
Applications	Western Blot : 0.3-1ug/ml ELISA (peptide) LOD : 1:64000
Limitations	This STUB1 antibody is available for research use only.



Western blot testing of human muscle lysate with STUB1 antibody at 0.3ug/ml. Predicted molecular weight: ~35kDa.

Description

Additional name(s) for this target protein: STIP1 homology and U-Box containing protein 1

Application Notes

Optimal dilution of the STUB1 antibody should be determined by the researcher.

Immunogen

Amino acids DAFISENGWVEDY were used as the immunogen for this STUB1 antibody.

Storage

Aliquot and store the STUB1 antibody at -20oC.