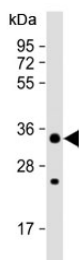


## STUB1 Antibody (F40135)

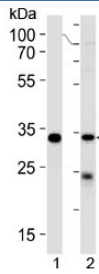
Catalog No.	Formulation	Size
F40135-0.4ML	In 1X PBS, pH 7.4, with 0.09% sodium azide	0.4 ml
F40135-0.08ML	In 1X PBS, pH 7.4, with 0.09% sodium azide	0.08 ml

[Bulk quote request](#)

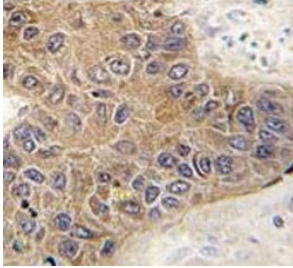
<b>Availability</b>	1-3 business days
<b>Species Reactivity</b>	Human
<b>Predicted Reactivity</b>	Chicken, Mouse
<b>Format</b>	Antigen affinity purified
<b>Host</b>	Rabbit
<b>Clonality</b>	Polyclonal (rabbit origin)
<b>Isotype</b>	Rabbit Ig
<b>Purity</b>	Antigen affinity
<b>UniProt</b>	Q9UNE7
<b>Localization</b>	Cytoplasmic
<b>Applications</b>	Western Blot : 1:1000 IHC (Paraffin) : 1:50-1:100
<b>Limitations</b>	This STUB1 antibody is available for research use only.



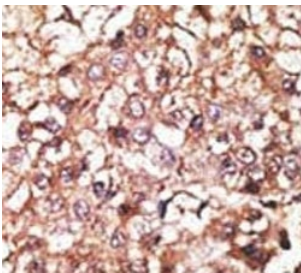
CHIP / STUB1 antibody western blot analysis in MCF7 lysate. Predicted molecular weight ~35 kDa.



STUB1 antibody western blot analysis in 1) 293 cell line and 2) human placenta lysate. Predicted molecular weight ~35 kDa.



IHC analysis of FFPE human hepatocarcinoma tissue stained with STUB1 antibody



IHC analysis of FFPE human hepatocarcinoma stained with the STUB1 antibody

## Description

CHIP is an E3 ligase for nNOS whose action is facilitated by (and possibly requires) its interaction with nNOS-bound hsp70. Co-chaperone CHIP, possibly with another E3 ligase(s), modulates the ubiquitylation of mutant Cu/Zn-superoxide dismutase and renders them more susceptible for proteasomal degradation. CHIP functions as a negative regulator of AR transcriptional activity by promoting AR degradation. CHIP-Hsc70 complex ubiquitinates phosphorylated tau and enhances cell survival. CHIP can interact with the Smad1/Smad4 proteins and block BMP signal transduction through the ubiquitin-mediated degradation of Smad proteins. CHIP E3 controls both the association of Hsp70/Hsp90 chaperones with ErbB2 and the down-regulation of ErbB2 induced by inhibitors of Hsp90. CHIP is associated with Parkin and enhances its ubiquitin ligase activity related to Parkinson's disease.

## Application Notes

Titration of the STUB1 antibody may be required due to differences in protocols and secondary/substrate sensitivity.

## Immunogen

A portion of amino acids 203-231 from the human protein was used as the immunogen for this STUB1 antibody.

## Storage

Aliquot the STUB1 antibody and store frozen at -20oC or colder. Avoid repeated freeze-thaw cycles.

