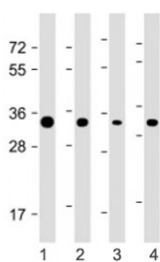


## STUB1 Antibody (C-Terminal Region) [clone 1008CT12.4.1] (F54140)

Catalog No.	Formulation	Size
F54140-0.2ML	In 1X PBS, pH 7.4, with 0.09% sodium azide	0.2 ml
F54140-0.05ML	In 1X PBS, pH 7.4, with 0.09% sodium azide	0.05 ml

[Bulk quote request](#)

<b>Availability</b>	1-3 business days
<b>Species Reactivity</b>	Human, Mouse
<b>Format</b>	Purified
<b>Clonality</b>	Monoclonal (mouse origin)
<b>Isotype</b>	Mouse IgG1, kappa
<b>Clone Name</b>	1008CT12.4.1
<b>Purity</b>	Protein G purified
<b>UniProt</b>	Q9UNE7
<b>Applications</b>	Western Blot : 1:4000
<b>Limitations</b>	This STUB1 antibody is available for research use only.



Western blot testing of STUB1 antibody at 1:4000: Lane 1) human HEK293, 2) HeLa, 3) HepG2 and 4) mouse L929 cell lysate. Predicted molecular weight ~35 kDa.

## Description

E3 ubiquitin-protein ligase which targets misfolded chaperone substrates towards proteasomal degradation. Collaborates with ATXN3 in the degradation of misfolded chaperone substrates: ATXN3 restricting the length of ubiquitin chain attached to STUB1/CHIP substrates and preventing further chain extension. Ubiquitinates NOS1 in concert with Hsp70 and Hsp40. Modulates the activity of several chaperone complexes, including Hsp70, Hsc70 and Hsp90. Mediates transfer of non-canonical short ubiquitin chains to HSPA8 that have no effect on HSPA8 degradation. Mediates polyubiquitination of DNA polymerase beta (POLB) at 'Lys-41', 'Lys-61' and 'Lys-81', thereby playing a role in base-excision repair: catalyzes polyubiquitination by amplifying the HUWE1/ARF- BP1-dependent monoubiquitination and

leading to POLB-degradation by the proteasome. Mediates polyubiquitination of CYP3A4. Ubiquitinates EPHA2 and may regulate the receptor stability and activity through proteasomal degradation. [UniProt]

## Application Notes

The stated application concentrations are suggested starting points. Titration of the STUB1 antibody may be required due to differences in protocols and secondary/substrate sensitivity.

## Immunogen

Recombinant human STUB1 was used as the immunogen for the STUB1 antibody.

## Storage

Aliquot the STUB1 antibody and store frozen at -20oC or colder. Avoid repeated freeze-thaw cycles.