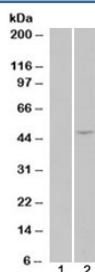


STRADB Antibody / Als2Cr2 / ILPIP (R33210)

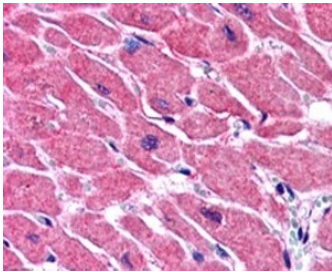
Catalog No.	Formulation	Size
R33210-100UG	0.5 mg/ml in 1X TBS, pH7.3, with 0.5% BSA (US sourced) and 0.02% sodium azide	100 ug

[Bulk quote request](#)

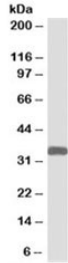
Availability	1-3 business days
Species Reactivity	Human
Predicted Reactivity	Dog, Cow
Format	Antigen affinity purified
Host	Goat
Clonality	Polyclonal (goat origin)
Isotype	Goat Ig
Purity	Antigen affinity
Gene ID	55437
Applications	Western Blot : 1-3ug/ml Immunohistochemistry (FFPE) : 3-6ug/ml ELISA (peptide) LOD : 1:32000
Limitations	This STRADB antibody is available for research use only.



HEK293 overexpressing ILPIP/STRADB (lane 2) tested with STRADB antibody (lane 1-mock transfection). Predicted molecular weight: ~47/31kDa (isoforms alpha/beta).



IHC staining of FFPE human heart with STRAD8 antibody. HIER: steamed with pH6 citrate buffer, AP-staining.



Western blot testing of human heart lysate with STRADB antibody at 1 ug/ml. Predicted molecular weight: ~47/31kDa (isoforms alpha/beta).

Description

Additional name(s) for this target protein: STE20-related kinase adaptor beta; ILP-interacting protein ILPIPA

Application Notes

Optimal dilution of the STRADB antibody should be determined by the researcher.

1. This STRADB antibody will detect both human isoforms of STRADB: isoform 1/alpha (418 AA) and 2/beta (280 AA).

Immunogen

Amino acids CDFPDEKDSYWEF were used as the immunogen for this STRADB antibody. (1)

Storage

Aliquot and store the STRADB antibody at -20oC.