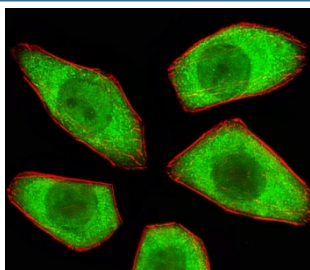


STRADA Antibody / LYK5 (F54391)

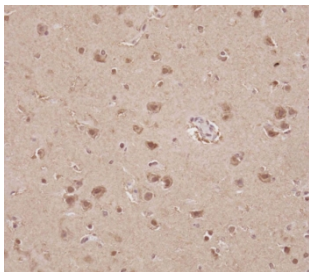
Catalog No.	Formulation	Size
F54391-0.4ML	In 1X PBS, pH 7.4, with 0.09% sodium azide	0.4 ml
F54391-0.08ML	In 1X PBS, pH 7.4, with 0.09% sodium azide	0.08 ml

[Bulk quote request](#)

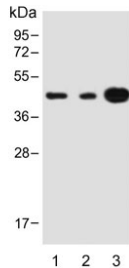
Availability	1-3 business days
Species Reactivity	Human, Mouse
Format	Purified
Clonality	Polyclonal (rabbit origin)
Isotype	Rabbit Ig
Purity	Antigen affinity purified
UniProt	Q7RTN6
Localization	Nuclear, cytoplasmic
Applications	Western Blot : 1:500-1:2000 Immunohistochemistry (FFPE) : 1:25 Immunofluorescence : 1:25 Flow Cytometry : 1:25 (1x10 ⁶ cells)
Limitations	This STRADA antibody is available for research use only.



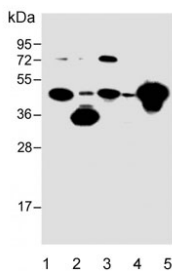
Immunofluorescent staining of human A549 cells with STRADA antibody (green) and anti-Actin (red).



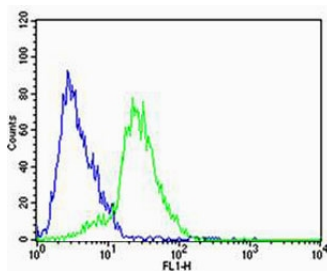
IHC testing of FFPE human brain tissue with STRADA antibody. HIER: steam section in pH6 citrate buffer for 20 min and allow to cool prior to staining.



Western blot testing of 1) human 293, 2) human MOLT-4 and 3) mouse brain lysate with STRADA antibody. Predicted molecular weight ~48 kDa.



Western blot testing of 1) human 293, 2) human HepG2, 3) human MOLT-4, 4) mouse NIH 3T3 and 5) mouse brain lysate with STRADA antibody. Predicted molecular weight ~48 kDa.



Flow cytometry testing of human SH-SY5Y cells with STRADA antibody; Blue=isotype control, Green= STRADA antibody.

Description

Pseudokinase which, in complex with CAB39/MO25 (CAB39/MO25alpha or CAB39L/MO25beta), binds to and activates STK11/LKB1. Adopts a closed conformation typical of active protein kinases and binds STK11/LKB1 as a pseudosubstrate, promoting conformational change of STK11/LKB1 in an active conformation.

Application Notes

The stated application concentrations are suggested starting points. Titration of the STRADA antibody may be required due to differences in protocols and secondary/substrate sensitivity.

Immunogen

A portion of amino acids 303-346 from the human protein was used as the immunogen for the STRADA antibody.

Storage

Aliquot the STRADA antibody and store frozen at -20oC or colder. Avoid repeated freeze-thaw cycles.

