

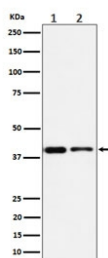
STOML2 Antibody / Stomatin like 2 / SLP-2 [clone 28S56] (RQ8418)

Catalog No.	Formulation	Size
RQ8418	Antibody in PBS with 0.02% sodium azide, 50% glycerol and 0.4-0.5mg/ml BSA	100 ul

Recombinant **RABBIT MONOCLONAL**

[Bulk quote request](#)

Availability	1-3 business days
Species Reactivity	Human, Mouse
Format	Purified
Host	Rabbit
Clonality	Recombinant Rabbit Monoclonal
Isotype	Rabbit IgG
Clone Name	28S56
Purity	Affinity chromatography
UniProt	Q9UJZ1
Applications	Western Blot : 1:500-1:2000
Limitations	This STOML2 antibody is available for research use only.



Western blot testing of 1) human Jurkat and 2) mouse RAW264.7 cell lysate with STOML2 antibody. Predicted molecular weight ~38 kDa.

Description

Mitochondrial protein that probably regulates the biogenesis and the activity of mitochondria. [UniProt]

Application Notes

Optimal dilution of the STOML2 antibody should be determined by the researcher.

Immunogen

A synthetic peptide derived from human Stomatin like 2 was used as the immunogen for the STOML2 antibody.

Storage

Store the STOML2 antibody at -20oC.