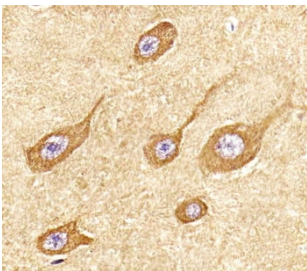


STMN2 Antibody / SCG10 (F54395)

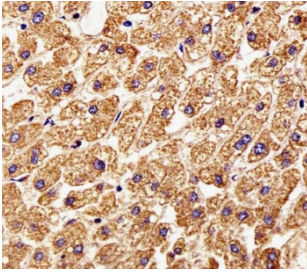
Catalog No.	Formulation	Size
F54395-0.4ML	In 1X PBS, pH 7.4, with 0.09% sodium azide	0.4 ml
F54395-0.08ML	In 1X PBS, pH 7.4, with 0.09% sodium azide	0.08 ml

[Bulk quote request](#)

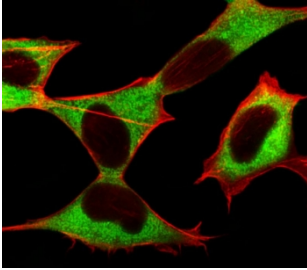
Availability	1-3 business days
Species Reactivity	Human, Mouse
Format	Purified
Host	Rabbit
Clonality	Polyclonal (rabbit origin)
Isotype	Rabbit Ig
Purity	Antigen affinity purified
UniProt	Q93045
Localization	Cytoplasmic
Applications	Western Blot : 1:500-1:2000 Immunohistochemistry (FFPE) : 1:25 Immunofluorescence : 1:25 Flow Cytometry : 1:25 (1x10e6 cells)
Limitations	This STMN2 antibody is available for research use only.



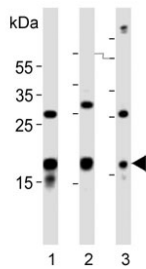
IHC testing of FFPE human brain tissue with STMN2 antibody. HIER: steam section in pH6 citrate buffer for 20 min and allow to cool prior to staining.



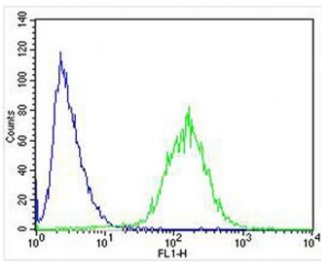
IHC testing of FFPE human liver tissue with STMN2 antibody. HIER: steam section in pH6 citrate buffer for 20 min and allow to cool prior to staining.



Immunofluorescent staining of fixed and permeabilized human SH-SY5Y cells with STMN2 antibody (green) and anti-Actin (red).



Western blot testing of 1) human brain, 2) mouse brain and 3) SH-SY5Y lysate with STMN2 antibody. Predicted molecular weight ~21 kDa.



Flow cytometry testing of fixed and permeabilized human SH-SY5Y cells with STMN2 antibody; Blue=isotype control, Green= STMN2 antibody.

Description

Regulator of microtubule stability. When phosphorylated by MAPK8, stabilizes microtubules and consequently controls neurite length in cortical neurons. In the developing brain, negatively regulates the rate of exit from multipolar stage and retards radial migration from the ventricular zone (By similarity).

Application Notes

The stated application concentrations are suggested starting points. Titration of the STMN2 antibody may be required due to differences in protocols and secondary/substrate sensitivity.

Immunogen

A portion of amino acids 82-116 from the human protein was used as the immunogen for the STMN2 antibody.

Storage

Aliquot the STMN2 antibody and store frozen at -20oC or colder. Avoid repeated freeze-thaw cycles.

