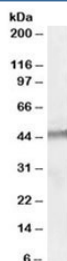


STK35 Antibody (R33861)

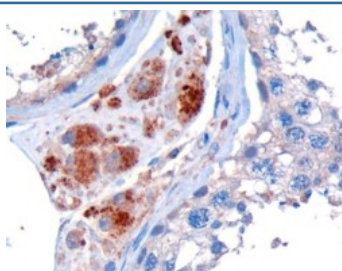
| Catalog No. | Formulation | Size |
|--------------|---|--------|
| R33861-100UG | 0.5 mg/ml in 1X TBS, pH7.3, with 0.5% BSA (US sourced) and 0.02% sodium azide | 100 ug |

[Bulk quote request](#)

| | |
|----------------------|---|
| Availability | 1-3 business days |
| Species Reactivity | Human |
| Predicted Reactivity | Cow, Dog, Mouse, Pig, Rat |
| Format | Antigen affinity purified |
| Clonality | Polyclonal (goat origin) |
| Isotype | Goat Ig |
| Purity | Antigen affinity |
| Gene ID | 140901 |
| Applications | Western Blot : 1-3ug/ml Immunohistochemistry (FFPE) : 10ug/ml ELISA (peptide) LOD : 1:16000 |
| Limitations | This STK35 antibody is available for research use only. |



Western blot testing of human testis lysate with STK35 antibody at 1ug/ml. Predicted molecular weight: ~45kDa.



IHC staining of FFPE human testis with STK35 antibody at 10ug/ml. HIER: microwaved with pH9 Tris/EDTA buffer, HRP-staining.

Description

Additional name(s) for this target protein: Serine/threonine kinase 35; Clk1

Application Notes

Optimal dilution of the STK35 antibody should be determined by the researcher.

Immunogen

Amino acids ELETRMDQVTCAA were used as the immunogen for this STK35 antibody.

Storage

Aliquot and store the STK35 antibody at -20oC.