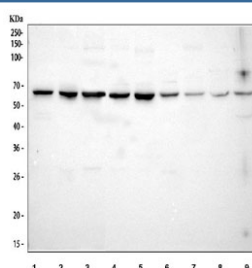


STIP1 Antibody / Stress induced phosphoprotein 1 (R32069)

Catalog No.	Formulation	Size
R32069	0.5mg/ml if reconstituted with 0.2ml sterile DI water	100 ug

Bulk quote request

Availability	1-3 business days
Species Reactivity	Human, Mouse, Rat
Format	Antigen affinity purified
Clonality	Polyclonal (rabbit origin)
Isotype	Rabbit IgG
Purity	Antigen affinity
Buffer	Lyophilized from 1X PBS with 2.5% BSA and 0.025% sodium azide
UniProt	P31948
Applications	Western Blot : 0.5-1ug/ml
Limitations	This STIP1 antibody is available for research use only.



Western blot testing of 1) human HeLa, 2) human COLO-320, 3) human MCF7, 4) rat C6, 5) rat RH35, 6) mouse brain, 7) mouse liver, 8) mouse Neuro-2a and 9) mouse HEPA1-6 cell lysate with STIP1 antibody. Expected molecular weight: 63/68/60 kDa (isoforms 1/2/3).

Description

STIP1 is an adaptor protein that coordinates the functions of HSP70 and HSP90 in protein folding. It is thought to assist in the transfer of proteins from HSP70 to HSP90 by binding both HSP90 and substrate-bound HSP70. STIP1 also stimulates the ATPase activity of HSP70 and inhibits the ATPase activity of HSP90, suggesting that it regulates both the conformations and ATPase cycles of these chaperones. The International Radiation Hybrid Mapping Consortium mapped the STIP1 gene to 11q13.

Application Notes

Optimal dilution of the STIP1 antibody should be determined by the researcher.

Immunogen

Amino acids RLILEQM~~Q~~KDPQALSEHLKNP~~V~~IAQKIQKLMDVGLIAIR of human STIP1 were used as the immunogen for the STIP1 antibody.

Storage

After reconstitution, the STIP1 antibody can be stored for up to one month at 4oC. For long-term, aliquot and store at -20oC. Avoid repeated freezing and thawing.