

Stefin B Antibody (R31218)

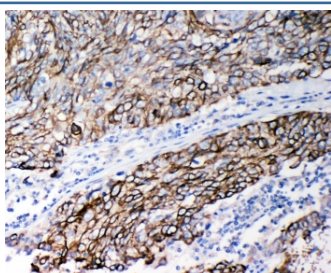
Catalog No.	Formulation	Size
R31218	0.5mg/ml if reconstituted with 0.2ml sterile DI water	100 ug

Bulk quote request

Availability	1-3 business days
Species Reactivity	Human
Format	Antigen affinity purified
Clonality	Polyclonal (rabbit origin)
Isotype	Rabbit IgG
Purity	Antigen affinity
Buffer	Lyophilized from 1X PBS with 2.5% BSA and 0.025% sodium azide/thimerosal
UniProt	P04080
Applications	Western Blot : 0.5-1ug/ml IHC (FFPE) : 0.5-1ug/ml
Limitations	This Stefin B antibody is available for research use only.



Western blot testing of Stefin B antibody; Lane 1: A549; 2: A431; 3: COLO320; 4: HeLa cell lysate. Predicted/observed molecular weight: ~11kDa.



IHC-P: Stefin B antibody testing of human lung cancer tissue

Description

Cystatin B (CSTB), also called Stefin B (STFB), is a small protein that is a member of the superfamily of cysteine protease inhibitors. It has been isolated from human spleen and liver and its amino acid sequence has been fully determined. The gene is located on 21q22.3. The protein is widely distributed and is localized mostly intracellularly, but has been found extracellularly. It is able to form a dimer stabilized by noncovalent forces, inhibiting papain and cathepsins I, h and b. Its role is thought to be as a protector against the proteinases leaking from lysosomes. A STFB multiprotein complex might have a specific cerebellar function, and that the loss of this function might contribute to the etiopathogenesis of EPM1. Upon differentiation to myotubes, STFB becomes excluded from the nucleus and lysosomes, suggesting that the subcellular distribution of the protein is dependent on the differentiation status of the cell.

Application Notes

The stated application concentrations are suggested starting amounts. Titration of the Stefin B antibody may be required due to differences in protocols and secondary/substrate sensitivity.

Immunogen

An amino acid sequence from the middle region of human Stefin B (QLEEKENKKFPVFKAVSFKS) was used as the immunogen for this Stefin B antibody.

Storage

After reconstitution, the Stefin B antibody can be stored for up to one month at 4°C. For long-term, aliquot and store at -20°C. Avoid repeated freezing and thawing.