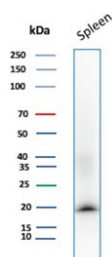


## Stathmin 1 Antibody / STMN1 [clone STMN1/8437] (V5505)

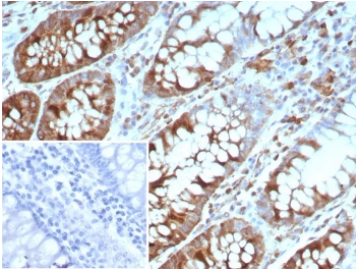
Catalog No.	Formulation	Size
V5505-100UG	0.2 mg/ml in 1X PBS with 0.1 mg/ml BSA (US sourced), 0.05% sodium azide	100 ug
V5505-20UG	0.2 mg/ml in 1X PBS with 0.1 mg/ml BSA (US sourced), 0.05% sodium azide	20 ug
V5505SAF-100UG	1 mg/ml in 1X PBS; BSA free, sodium azide free	100 ug

[Bulk quote request](#)

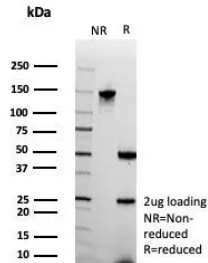
<b>Availability</b>	1-3 business days
<b>Species Reactivity</b>	Human
<b>Format</b>	Purified
<b>Host</b>	Mouse
<b>Clonality</b>	Monoclonal (mouse origin)
<b>Isotype</b>	Mouse IgG1, kappa
<b>Clone Name</b>	STMN1/8437
<b>Purity</b>	Protein A/G affinity
<b>UniProt</b>	P16949
<b>Localization</b>	Cytoplasm, Cytoskeleton
<b>Applications</b>	Immunohistochemistry (FFPE) : 1-2ug/ml Western Blot : 2-4ug/ml
<b>Limitations</b>	This Stathmin 1 antibody is available for research use only.



Western blot testing of human spleen tissue with Stathmin 1 antibody (clone STMN1/8437). Predicted molecular weight ~17 kDa.



IHC staining of FFPE human colon carcinoma tissue with Stathmin 1 antibody (clone STMN1/8437). Inset: PBS used in place of primary Ab (secondary Ab negative control).  
HIER: boil tissue sections in pH 9 10mM Tris with 1mM EDTA for 20 min and allow to cool before testing.



SDS-PAGE analysis of purified, BSA-free Stathmin 1 antibody (clone STMN1/8437) as confirmation of integrity and purity.

## Description

Stathmin 1 (Oncoprotein 18, STM1, prosolin or metablastin) is a conserved, Tubulin-associated, intracellular phosphoprotein. Many different phosphorylated forms of the protein are observed, and it is expressed as two different isoforms. Stathmin 1 is considered a critical regulator of microtubulin dynamics and is downregulated by p53. It serves as a transducing protein, via phosphorylation, for a variety of cell signaling pathways and is involved in both mitosis and differentiation. It is present in many cancers, including breast carcinomas, and is highly expressed in acute leukemias of different subtypes.

## Application Notes

Optimal dilution of the Stathmin 1 antibody should be determined by the researcher.

## Immunogen

A recombinant fragment of human STMN1 protein was used as the immunogen for the Stathmin 1 antibody.

## Storage

Aliquot the Stathmin 1 antibody and store frozen at -20oC or colder. Avoid repeated freeze-thaw cycles.