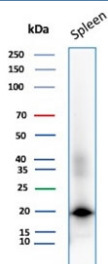


## Stathmin 1 Antibody / Op18 / STMN1 [clone STMN1/8012] (V4689)

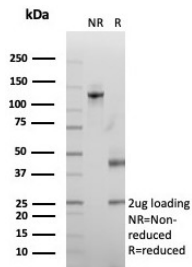
Catalog No.	Formulation	Size
V4689-100UG	0.2 mg/ml in 1X PBS with 0.1 mg/ml BSA (US sourced), 0.05% sodium azide	100 ug
V4689-20UG	0.2 mg/ml in 1X PBS with 0.1 mg/ml BSA (US sourced), 0.05% sodium azide	20 ug
V4689SAF-100UG	1 mg/ml in 1X PBS; BSA free, sodium azide free	100 ug

[Bulk quote request](#)

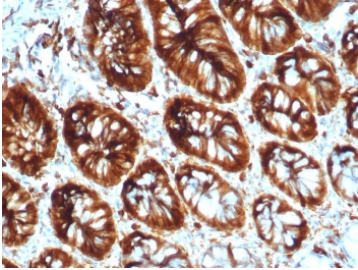
<b>Availability</b>	1-3 business days
<b>Species Reactivity</b>	Human
<b>Format</b>	Purified
<b>Host</b>	Mouse
<b>Clonality</b>	Monoclonal (mouse origin)
<b>Isotype</b>	Mouse IgG1, kappa
<b>Clone Name</b>	STMN1/8012
<b>Purity</b>	Protein A/G affinity
<b>UniProt</b>	P16949
<b>Localization</b>	Cytoplasm
<b>Applications</b>	Immunohistochemistry (FFPE) : 1-2ug/ml for 30 min at RT Western Blot : 2-4ug/ml
<b>Limitations</b>	This Stathmin 1 antibody is available for research use only.



Western blot testing of human spleen tissue lysate with Stathmin 1 antibody. Expected molecular weight ~17 kDa.



SDS-PAGE analysis of purified, BSA-free Stathmin 1 antibody (clone STMN1/8012) as confirmation of integrity and purity.



IHC staining of FFPE human colon tissue with Stathmin 1 antibody (clone STMN1/8012).  
HIER: boil tissue sections in pH 9 10mM Tris with 1mM EDTA for 20 min and allow to cool before testing.

## Description

Stathmin (Op18, oncoprotein 18, prosolin or metablastin) is a conserved, Tubulin-associated, intracellular phosphoprotein.

## Application Notes

Optimal dilution of the Stathmin 1 antibody should be determined by the researcher.

## Immunogen

A recombinant fragment of human STMN1 protein was used as the immunogen for the Stathmin 1 antibody.

## Storage

Aliquot the Stathmin 1 antibody and store frozen at -20oC or colder. Avoid repeated freeze-thaw cycles.