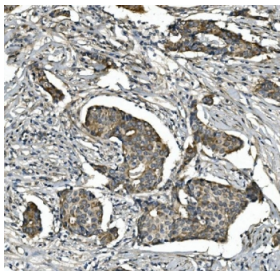


## STAT6 Antibody (RQ5923)

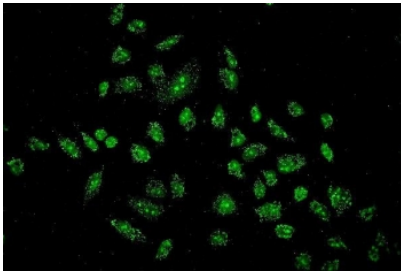
Catalog No.	Formulation	Size
RQ5923	0.5mg/ml if reconstituted with 0.2ml sterile DI water	100 ug

### Bulk quote request

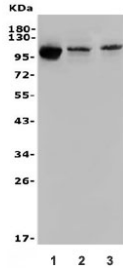
<b>Availability</b>	1-3 business days
<b>Species Reactivity</b>	Human
<b>Format</b>	Antigen affinity purified
<b>Host</b>	Rabbit
<b>Clonality</b>	Polyclonal (rabbit origin)
<b>Isotype</b>	Rabbit IgG
<b>Purity</b>	Affinity purified
<b>Buffer</b>	Lyophilized from 1X PBS with 2% Trehalose and 0.025% sodium azide
<b>UniProt</b>	P42226
<b>Localization</b>	Nuclear, cytoplasmic
<b>Applications</b>	Western Blot : 0.5-1ug/ml Immunohistochemistry : 1-2ug/ml Immunofluorescence : 2-4ug/ml Flow Cytometry : 1-3ug/million cells Direct ELISA : 0.1-0.5ug/ml
<b>Limitations</b>	This STAT6 antibody is available for research use only.



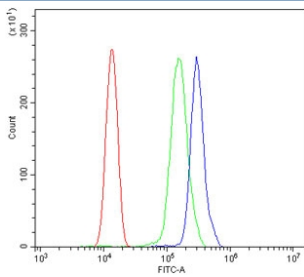
IHC staining of FFPE human breast cancer with STAT6 antibody. HIER: boil tissue sections in pH8 EDTA for 20 min and allow to cool before testing.



Immunofluorescent staining of FFPE human A549 cells with GNB1 antibody. HIER: steam section in pH6 citrate buffer for 20 min.



Western blot testing of human 1) Raji, 2) Jurkat and 3) A549 lysate with STAT6 antibody. Predicted molecular weight ~94 kDa.



Flow cytometry testing of human ThP-1 cells with STAT6 antibody at 1ug/million cells (blocked with goat sera); Red=cells alone, Green=isotype control, Blue= STAT6 antibody.

## Description

STAT6 is a human gene. The protein encoded by this gene is a member of the STAT family of transcription factors. The gene spans 19 kb and contains 23 exons. In response to cytokines and growth factors, STAT family members are phosphorylated by the receptor associated kinases, and then form homo- or heterodimers that translocate to the cell nucleus where they act as transcription activators. This protein plays a central role in exerting IL4 mediated biological responses. It is found to induce the expression of BCL2L1/BCL-X(L), which is responsible for the anti-apoptotic activity of IL4. Knockout studies in mice suggested the roles of this gene in differentiation of T helper 2 (Th2), expression of cell surface markers, and class switch of immunoglobulins.

## Application Notes

Optimal dilution of the STAT6 antibody should be determined by the researcher.

## Immunogen

Recombinant human protein (amino acids Q152-D419) was used as the immunogen for the STAT6 antibody.

## Storage

After reconstitution, the STAT6 antibody can be stored for up to one month at 4°C. For long-term, aliquot and store at -20°C. Avoid repeated freezing and thawing.

