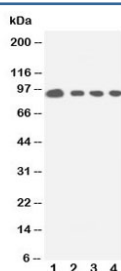


STAT5a Antibody (R30938)

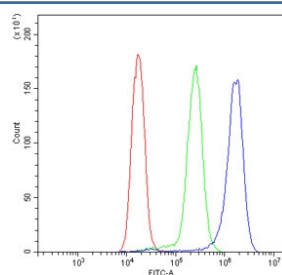
Catalog No.	Formulation	Size
R30938	0.5mg/ml if reconstituted with 0.2ml sterile DI water	100 ug

Bulk quote request

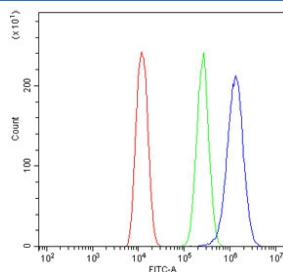
Availability	1-3 business days
Species Reactivity	Human
Format	Antigen affinity purified
Host	Rabbit
Clonality	Polyclonal (rabbit origin)
Isotype	Rabbit IgG
Purity	Antigen affinity
Buffer	Lyophilized from 1X PBS with 2.5% BSA and 0.025% sodium azide/thimerosal
UniProt	P42229
Applications	Western Blot : 0.5-1ug/ml Flow Cytometry : 1-3ug/10 ⁶ cells
Limitations	This STAT5a antibody is available for research use only.



Western blot testing of human 1: HeLa; 2: COLO320; 3: Jurkat; 4: CEM cell lysate with STAT5a antibody. Predicted molecular weight: ~91 kDa.



Flow cytometry testing of human Jurkat cells with STAT5a antibody at 1ug/10⁶ cells (blocked with goat sera); Red=cells alone, Green=isotype control, Blue= STAT5a antibody.



Flow cytometry testing of human U-2 OS cells with STAT5a antibody at 1ug/10⁶ cells (blocked with goat sera); Red=cells alone, Green=isotype control, Blue= STAT5a antibody.

Description

STAT5 (Signal transducer and activator of transcription 5) also known as STAT5a, is a protein that serve the dual function of signal transducers and activators of transcription in cells exposed to signaling polypeptides. Hou et al.(1995) cloned the human cDNA from an umbilical vein endothelial cell library and found that it encodes a 794-amino acid polypeptide with a predicted mass of approximately 90.5 kD. To analyze the possible role of STAT5 in human GH-induced proliferation, Friedrichsen et al.(2001) expressed a dominant-negative STAT5 mutant, STAT5Delta-749, in INS-1 cells under the control of a doxycycline-inducible promoter by stable transfection. Chromatin immunoprecipitation analysis confirmed direct binding of STAT5 to the HIF2A promoter 344 bp upstream of the HIF2A start site. STAT5 overexpression independently resulted in erythroid commitment in megakaryocytic-erythroid progenitors, which was abrogated by knockdown of GATA1. The protein is responsible for the immediate-early induction of the long isoform of the BCL2-related protein in erythroid cells through direct binding to the promoter of the BCLX gene.

Application Notes

The stated application concentrations are suggested starting amounts. Titration of the STAT5a antibody may be required due to differences in protocols and secondary/substrate sensitivity.

Immunogen

An amino acid sequence from the C-terminus of human STAT5a (YNMYPQNPDPHVLDQDGE) was used as the immunogen for this STAT5a antibody.

Storage

After reconstitution, the STAT5a antibody can be stored for up to one month at 4oC. For long-term, aliquot and store at -20oC. Avoid repeated freezing and thawing.