

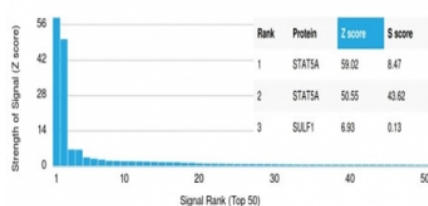
STAT5A Antibody [clone PCRP-STAT5A-1A11] (V9237)

Catalog No.	Formulation	Size
V9237-100UG	0.2 mg/ml in 1X PBS with 0.1 mg/ml BSA (US sourced), 0.05% sodium azide	100 ug
V9237-20UG	0.2 mg/ml in 1X PBS with 0.1 mg/ml BSA (US sourced), 0.05% sodium azide	20 ug
V9237SAF-100UG	1 mg/ml in 1X PBS; BSA free, sodium azide free	100 ug

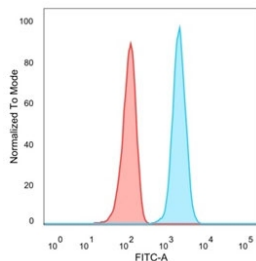
[Bulk quote request](#)

Availability	1-3 business days
Species Reactivity	Human
Format	Purified
Host	Mouse
Clonality	Monoclonal (mouse origin)
Isotype	Mouse IgG1
Clone Name	PCRP-STAT5A-1A11
Purity	Protein A/G affinity
UniProt	P42229
Localization	Cytoplasm, Nucleus
Applications	Flow Cytometry : 1-2ug/million cells
Limitations	This STAT5A antibody is available for research use only.

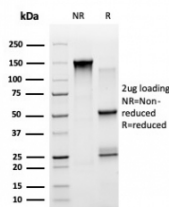
Human Protein Microarray Specificity Validation



Analysis of HuProt(TM) microarray containing more than 19,000 full-length human proteins using STAT5A antibody (clone PCRP-STAT5A-1A11). These results demonstrate the foremost specificity of the PCRP-STAT5A-1A11 mAb. Z- and S- score: The Z-score represents the strength of a signal that an antibody (in combination with a fluorescently-tagged anti-IgG secondary Ab) produces when binding to a particular protein on the HuProt(TM) array. Z-scores are described in units of standard deviations (SD's) above the mean value of all signals generated on that array. If the targets on the HuProt(TM) are arranged in descending order of the Z-score, the S-score is the difference (also in units of SD's) between the Z-scores. The S-score therefore represents the relative target specificity of an Ab to its intended target.



FACS staining of PFA-fixed human HeLa cells with STAT5A antibody (blue, clone PCRP-STAT5A-1A11) and isotype control (red).



SDS-PAGE analysis of purified, BSA-free STAT5A antibody (PCRP-STAT5A-1A11) as confirmation of integrity and purity.

Description

Signal transducer and activator of transcription 5A (Stat5a) and Stat5b, which share 96% homology, undergo receptor tyrosine kinase or G protein-coupled receptor-dependent phosphorylation in response to cytokines or growth factors, and then form homo- or heterodimers that translocate to the nucleus, where they initiate transcription. Activation of Stat5a via IL-2, IL-3, IL-7/ GM-CSF, erythropoietin, thrombopoietin and growth hormones influences proliferation, differentiation and apoptosis in lymphohematopoietic cells. Phosphorylation of Stat5a at Ser127/Ser128 and Ser779 are contingent on ErbB-4- mediated activation of Stat5a. Activation of Stat5b via IL-2, IL-4, CSF-1 and growth hormones influences TCR signaling, apoptosis, adult mammary gland development and sexual dimorphism of liver gene expression. Stat5b is the major liver-expressed Stat5 form that has been shown to fuse with the retinoic acid receptor a gene in acute promyelocytic leukemias (APLL). Stat5a/b null mice have severely impaired lymphoid development and differentiation.

Application Notes

Optimal dilution of the STAT5A antibody should be determined by the researcher.

Immunogen

STAT5A protein was used as the immunogen for the STAT5A antibody.

Storage

Aliquot the STAT5A antibody and store frozen at -20oC or colder. Avoid repeated freeze-thaw cycles.