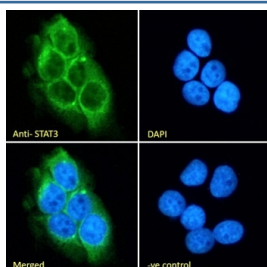


## STAT3 Antibody (R33548)

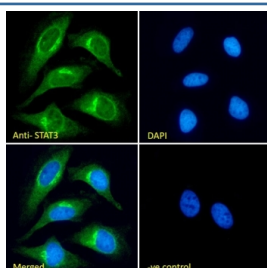
Catalog No.	Formulation	Size
R33548-100UG	0.5 mg/ml in 1X TBS, pH7.3, with 0.5% BSA (US sourced) and 0.02% sodium azide	100 ug

[Bulk quote request](#)

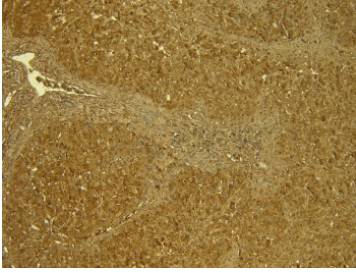
<b>Availability</b>	1-3 business days
<b>Species Reactivity</b>	Human
<b>Format</b>	Antigen affinity purified
<b>Host</b>	Goat
<b>Clonality</b>	Polyclonal (goat origin)
<b>Isotype</b>	Goat Ig
<b>Purity</b>	Antigen affinity
<b>Gene ID</b>	6774
<b>Applications</b>	Immunohistochemistry (FFPE) : 6-7ug/ml Immunofluorescence : 10ug/ml Flow Cytometry : 10ug/ml ELISA (peptide) LOD : 1:16000
<b>Limitations</b>	This STAT3 antibody is available for research use only.



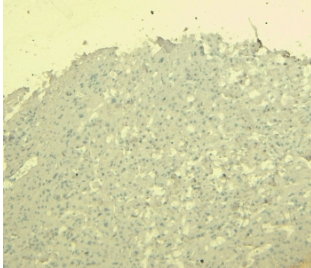
Immunofluorescent staining of fixed and permeabilized human A431 cells with STAT3 antibody (green) at 10ug/ml and DAPI nuclear stain (blue).



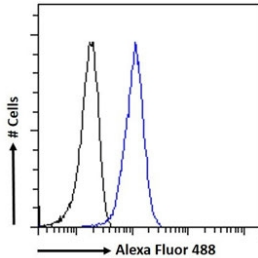
Immunofluorescent staining of fixed and permeabilized human HeLa cells with STAT3 antibody (green) at 10ug/ml and DAPI nuclear stain (blue).



IHC testing of FFPE human liver tissue with STAT3 antibody at 7ug/ml. HIER: steamed with pH9 Tris/EDTA buffer, HRP-staining.



Negative control: IHC staining of FFPE human liver tissue without primary antibody. HIER: steamed with pH6 citrate buffer, HRP-staining.



FACS testing of fixed and permeabilized human A431 cells with STAT3 antibody (blue) at 10ug/ml and naive goat Ig (black).

## Description

Additional name(s) for this target protein: Signal transducer and activator of transcription 3

## Application Notes

Optimal dilution of the STAT3 antibody should be determined by the researcher.

1. This STAT3 antibody is specific for isoforms 1 and 2 of the protein.
2. Reported to specifically stain human HEK293 cells and rat glial cells in immunofluorescence.

## Immunogen

Amino acids DMELTSECATSPM were used as the immunogen for this STAT3 antibody.

## Storage

Aliquot and store the STAT3 antibody at -20oC.

