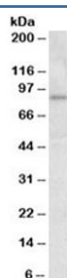


STAT3 Antibody (R33329)

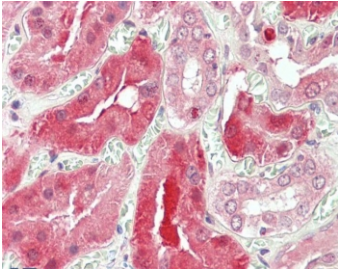
Catalog No.	Formulation	Size
R33329-100UG	0.5 mg/ml in 1X TBS, pH7.3, with 0.5% BSA (US sourced) and 0.02% sodium azide	100 ug

[Bulk quote request](#)

Availability	1-3 business days
Species Reactivity	Human
Predicted Reactivity	Mouse, Rat, Dog
Format	Antigen affinity purified
Host	Goat
Clonality	Polyclonal (goat origin)
Isotype	Goat Ig
Purity	Antigen affinity
Gene ID	6774
Localization	Nuclear, cytoplasmic
Applications	Western Blot : 1-3ug/ml IHC (FFPE) : 5ug/ml ELISA (peptide) LOD : 1:16000
Limitations	This STAT3 antibody is available for research use only.



Western blot testing of human heart lysate with STAT3 antibody at 1ug/ml. Predicted molecular weight ~88 kDa.



IHC testing of FFPE human kidney tissue with STAT3 antibody at 5ug/ml. Required HIER: steamed antigen retrieval with pH6 citrate buffer; AP-staining.

Description

Additional name(s) for this target protein: Signal transducer and activator of transcription 3

Application Notes

Optimal dilution of the STAT3 antibody should be determined by the researcher.

Immunogen

Amino acids CRPESQEHPEADP were used as the immunogen for this STAT3 antibody.

Storage

Aliquot and store the STAT3 antibody at -20oC.