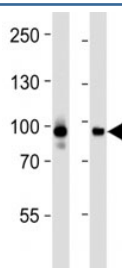


## STAT3 Antibody [clone 1200CT146.104.153] (F52478)

Catalog No.	Formulation	Size
F52478-0.4ML	In 1X PBS, pH 7.4, with 0.09% sodium azide	0.4 ml
F52478-0.08ML	In 1X PBS, pH 7.4, with 0.09% sodium azide	0.08 ml

[Bulk quote request](#)

<b>Availability</b>	1-3 business days
<b>Species Reactivity</b>	Human
<b>Predicted Reactivity</b>	Mouse, Rat, Pig
<b>Format</b>	Purified
<b>Host</b>	Mouse
<b>Clonality</b>	Monoclonal (mouse origin)
<b>Isotype</b>	Mouse IgG2a, k
<b>Clone Name</b>	1200CT146.104.153
<b>Purity</b>	Purified
<b>UniProt</b>	P40763
<b>Applications</b>	Western Blot : 1:1000
<b>Limitations</b>	This STAT3 antibody is available for research use only.



Western blot analysis of lysate from CEM, HeLa cell line (left to right) using STAT3 antibody at 1:1000 for each lane.

## Description

Signal transducer and transcription activator that mediates cellular responses to interleukins, KITLG/SCF and other growth factors. May mediate cellular responses to activated FGFR1, FGFR2, FGFR3 and FGFR4. Binds to the interleukin-6 (IL-6)- responsive elements identified in the promoters of various acute- phase protein genes. Activated by IL31 through IL31RA. Cytoplasmic STAT3 represses macroautophagy by inhibiting EIF2AK2/PKR activity. Plays an

important role in host defense in methicillin-resistant *S.aureus* lung infection by regulating the expression of the antimicrobial lectin REG3G (By similarity).

## **Application Notes**

Titration of the STAT3 antibody may be required due to differences in protocols and secondary/substrate sensitivity.

## **Immunogen**

This STAT3 antibody was produced from a mouse immunized with a recombinant protein from human.

## **Storage**

Aliquot the STAT3 antibody and store frozen at -20oC or colder. Avoid repeated freeze-thaw cycles.