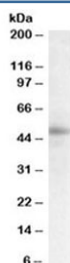


STAP2 Antibody (R34734)

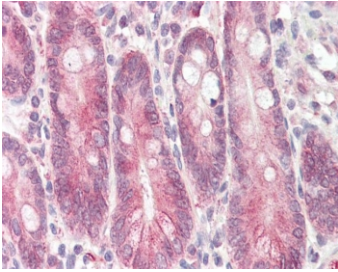
Catalog No.	Formulation	Size
R34734-100UG	0.5 mg/ml in 1X TBS, pH7.3, with 0.5% BSA (US sourced) and 0.02% sodium azide	100 ug

[Bulk quote request](#)

Availability	1-3 business days
Species Reactivity	Human
Format	Antigen affinity purified
Host	Goat
Clonality	Polyclonal (goat origin)
Isotype	Goat Ig
Purity	Antigen affinity
Gene ID	55620
Localization	Cytoplasmic
Applications	Western Blot : 0.3-1ug/ml IHC (FFPE) : 3-6ug/ml ELISA (peptide) LOD : 1:128000
Limitations	This STAP2 antibody is available for research use only.



Western blot testing of human breast lysate with STAP2 antibody at 0.3ug/ml. Predicted molecular weight: ~50 kDa.



IHC testing of FFPE human small intestine with STAP2 antibody at 3.75ug/ml. HIER: steamed antigen retrieval with pH6 citrate buffer; AP-staining.

Description

Additional name(s) for this target protein: Signal transducing adaptor family member 2

Application Notes

Optimal dilution of the STAP2 antibody should be determined by the researcher.

1. This STAP2 antibody will detect isoforms 1 and 2.

Immunogen

Amino acids LQKKLEKRRRALEH were used as the immunogen for this STAP2 antibody.

Storage

Aliquot and store the STAP2 antibody at -20oC.