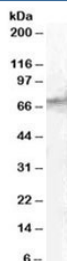


STAM2 Antibody (R35458)

Catalog No.	Formulation	Size
R35458-100UG	0.5 mg/ml in 1X TBS, pH7.3, with 0.5% BSA (US sourced) and 0.02% sodium azide	100 ug

[Bulk quote request](#)

Availability	1-3 business days
Species Reactivity	Human
Predicted Reactivity	Dog, Mouse
Format	Antigen affinity purified
Host	Goat
Clonality	Polyclonal (goat origin)
Isotype	Goat Ig
Purity	Antigen affinity
Gene ID	10254
Applications	Western Blot : 1-3ug/ml ELISA (peptide) LOD : 1:8000
Limitations	This STAM2 antibody is available for research use only.



Western blot testing of human spleen lysate with STAM2 antibody at 1ug/ml. Predicted molecular weight: ~58kDa, routinely observed at ~70kDa. (Ref 1)

Description

Additional name(s) for this target protein: Signal transducing adaptor molecule (SH3 domain and ITAM motif) 2

Application Notes

Optimal dilution of the STAM2 antibody should be determined by the researcher.

Immunogen

Amino acids QSIDPTDSKPDSQD were used as the immunogen for this STAM2 antibody. No cross-reaction expected with STAM1.

Storage

Aliquot and store the STAM2 antibody at -20oC.

References (1)