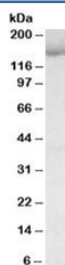


STAG2 Antibody (R36040)

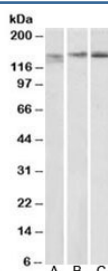
Catalog No.	Formulation	Size
R36040-100UG	0.5 mg/ml in 1X TBS, pH7.3, with 0.5% BSA (US sourced) and 0.02% sodium azide	100 ug

[Bulk quote request](#)

Availability	1-3 business days
Species Reactivity	Human, Mouse, Rat
Predicted Reactivity	Dog, Pig, Cow
Format	Antigen affinity purified
Host	Goat
Clonality	Polyclonal (goat origin)
Isotype	Goat Ig
Purity	Antigen affinity
Gene ID	10735
Applications	Western Blot : 0.03-0.1ug/ml ELISA (peptide) LOD : 1:32000
Limitations	This STAG2 antibody is available for research use only.



Western blot testing of K562 lysate with STAG2 antibody at 0.03ug/ml. Predicted molecular weight (human): ~150kDa.



Western blot of mouse spleen (A), mouse thymus (B) and rat spleen (C) lysates with STAG2 antibody at 0.3ug/ml. Predicted molecular weight (mouse): ~140kDa.

Description

Additional name(s) for this target protein: Stromal antigen 2; SA2

Application Notes

Optimal dilution of the STAG2 antibody should be determined by the researcher.

Immunogen

Amino acids SRGSTVRSKKSKPST were used as the immunogen for this STAG2 antibody.

Storage

Aliquot and store the STAG2 antibody at -20oC.