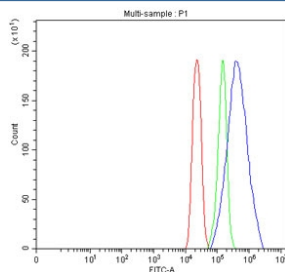


ST15 Antibody / RECK / Suppressor of tumorigenicity 15 (RQ8705)

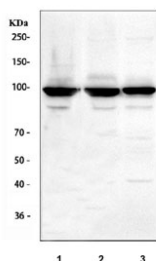
Catalog No.	Formulation	Size
RQ8705	0.5mg/ml if reconstituted with 0.2ml sterile DI water	100 ug

Bulk quote request

Availability	1-3 days
Species Reactivity	Human
Format	Antigen affinity purified
Host	Rabbit
Clonality	Polyclonal (rabbit origin)
Isotype	Rabbit IgG
Purity	Antigen affinity chromatography
Buffer	Lyophilized from 1X PBS with 2% Trehalose
UniProt	O95980
Applications	Western Blot : 1-2ug/ml Flow Cytometry : 1-3ug/million cells ELISA : 0.1-0.5ug/ml
Limitations	This ST15 antibody is available for research use only.



Flow cytometry testing of fixed human U-251 cells with ST15 antibody at 1ug/million cells (blocked with goat sera); Red=cells alone, Green=isotype control, Blue= ST15 antibody.



Western blot testing of human 1) 293T, 2) U-251 and 3) Jurkat cell lysate with ST15 antibody. Predicted molecular weight ~106 kDa.

Description

Reversion-inducing-cysteine-rich protein with kazal motifs, also known as RECK and Suppressor of tumorigenicity 15 (ST15), is a human gene, thought to be a metastasis suppressor. The protein encoded by this gene is a cysteine-rich, extracellular protein with protease inhibitor-like domains whose expression is suppressed strongly in many tumors and cells transformed by various kinds of oncogenes. In normal cells, this membrane-anchored glycoprotein may serve as a negative regulator for matrix metalloproteinase-9, a key enzyme involved in tumor invasion and metastasis. Several transcript variants encoding different isoforms have been found for this gene.

Application Notes

Optimal dilution of the ST15 antibody should be determined by the researcher.

Immunogen

An E.coli-derived human recombinant protein (amino acids N371-A414) was used as the immunogen for the ST15 antibody.

Storage

After reconstitution, the ST15 antibody can be stored for up to one month at 4oC. For long-term, aliquot and store at -20oC. Avoid repeated freezing and thawing.