

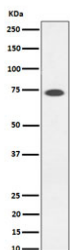
SSTR3 Antibody / Somatostatin receptor type 3 [clone 29S11] (RQ8859)

Catalog No.	Formulation	Size
RQ8859	Antibody in PBS with 0.02% sodium azide, 50% glycerol and 0.4-0.5mg/ml BSA	100 ul

Recombinant **RABBIT MONOCLONAL**

[Bulk quote request](#)

Availability	1-2 days
Species Reactivity	Human
Format	Purified
Host	Rabbit
Clonality	Recombinant Rabbit Monoclonal
Isotype	Rabbit IgG
Clone Name	29S11
Purity	Affinity chromatography
UniProt	P32745
Applications	Western Blot : 1:500-1:2000 Flow Cytometry : 1:50
Limitations	This SSTR3 antibody is available for research use only.



Western blot testing of transfected human 293T cells with SSTR3 antibody.

Description

SSTR3 is a subtype of the somatostatin receptor family, which are G-protein-coupled receptors that bind to the hormone somatostatin. This hormone is involved in the inhibition of secretion of various other hormones, making it a key player in the regulation of numerous bodily functions. SSTR3 is primarily expressed in the central nervous system, where it plays a crucial role in modulating neurotransmission. This receptor has been implicated in a wide range of neurological disorders, including depression, anxiety, and schizophrenia, making it a promising target for the development of novel therapeutic

interventions. In addition to its role in the central nervous system, SSTR3 also plays a key role in the regulation of insulin secretion in the pancreas and the growth of various types of cancer cells.

Application Notes

Optimal dilution of the SSTR3 antibody should be determined by the researcher.

Immunogen

A synthetic peptide specific to human SSTR3 protein was used as the immunogen for the SSTR3 antibody.

Storage

Store the SSTR3 antibody at -20oC.