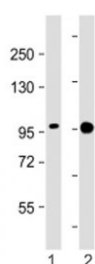


SSH3 Antibody (F54122)

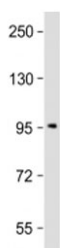
Catalog No.	Formulation	Size
F54122-0.2ML	In 1X PBS, pH 7.4, with 0.09% sodium azide	0.2 ml
F54122-0.05ML	In 1X PBS, pH 7.4, with 0.09% sodium azide	0.05 ml

[Bulk quote request](#)

Availability	1-3 business days
Species Reactivity	Human
Format	Antigen affinity purified
Clonality	Polyclonal (rabbit origin)
Isotype	Rabbit Ig
Purity	Antigen affinity
UniProt	Q8TE77
Applications	Western Blot : 1:2000
Limitations	This SSH3 antibody is available for research use only.



Western blot testing of SSH3 antibody at 1:2000: Lane 1) human A431 and 2) ZR-75-1 cell lysate. Predicted molecular weight ~73 kDa, can be observed at 90-95 kDa.



Western blot testing of SSH3 antibody at 1:2000 + ZR-75-1 cell lysate. Predicted molecular weight ~73 kDa, can be observed at 90-95 kDa.

Description

Protein phosphatase which may play a role in the regulation of actin filament dynamics. Can dephosphorylate and activate the actin binding/depolymerizing factor cofilin, which subsequently binds to actin filaments and stimulates their disassembly (By similarity). [UniProt]

Application Notes

The stated application concentrations are suggested starting points. Titration of the SSH3 antibody may be required due to differences in protocols and secondary/substrate sensitivity.

Immunogen

A portion of amino acids 10-43 from human SSH3 was used as the immunogen for the SSH3 antibody.

Storage

Aliquot the SSH3 antibody and store frozen at -20oC or colder. Avoid repeated freeze-thaw cycles.