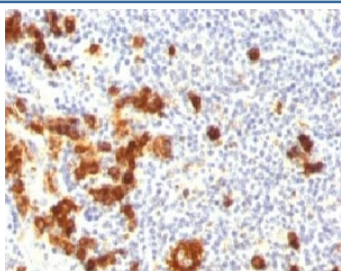


## SSEA-1 Antibody Cocktail [clone FUT4/815 + BRA-4F1] (V2524)

Catalog No.	Formulation	Size
V2524-100UG	0.2 mg/ml in 1X PBS with 0.1 mg/ml BSA (US sourced) and 0.05% sodium azide	100 ug
V2524-20UG	0.2 mg/ml in 1X PBS with 0.1 mg/ml BSA (US sourced) and 0.05% sodium azide	20 ug
V2524SAF-100UG	1 mg/ml in 1X PBS; BSA free, sodium azide free	100 ug
V2524IHC-7ML	Prediluted in 1X PBS with 0.1 mg/ml BSA (US sourced) and 0.05% sodium azide; *For IHC use only*	7 ml

**Bulk quote request**

<b>Availability</b>	1-3 business days
<b>Species Reactivity</b>	Human, Mouse, Rat
<b>Format</b>	Purified
<b>Clonality</b>	Monoclonal (mouse origin)
<b>Isotype</b>	Mouse IgM, kappa
<b>Clone Name</b>	FUT4/815 + BRA-4F1
<b>Purity</b>	PEG precipitation
<b>UniProt</b>	P22083
<b>Localization</b>	Cytoplasmic and cell surface
<b>Applications</b>	Immunohistochemistry (FFPE) : 0.5-1ug/ml for 30 min at RT
<b>Limitations</b>	This SSEA-1 antibody is available for research use only.



IHC: Formalin-fixed, paraffin-embedded human Hodgkin's lymphoma stained with SSEA-1 antibody (FUT4/815 + BRA-4F1).

## Description

SSEA-1/CD15 plays a role in mediating phagocytosis, bactericidal activity, and chemotaxis. It is present on >95% of granulocytes including neutrophils and eosinophils and to a lesser degree on monocytes. In addition, it is expressed in Reed-Sternberg cells and some epithelial cells. SSEA-1/CD15 antibody is very useful in the identification of Hodgkin's disease. CD15 is occasionally expressed in large cell lymphomas of both B and T phenotypes which otherwise have a quite distinct histological appearance.

## Application Notes

Optimal dilution of the SSEA-1 antibody cocktail should be determined by the researcher.

1. Staining of formalin-fixed tissues requires boiling tissue sections in 10mM Tris with 1mM EDTA, pH 9.0, for 10-20 min followed by cooling at RT for 20 minutes
2. The prediluted format is supplied in a dropper bottle and is optimized for use in IHC. After epitope retrieval step (if required), drip mAb solution onto the tissue section and incubate at RT for 30 min.

## Immunogen

Purified human neutrophils (FUT4/815) and Myelomonocytic leukemia cells (BRA-4F1) were used as the immunogen for the SSEA-1 antibody cocktail.

## Storage

Store the SSEA-1 antibody at 2-8°C (with azide) or aliquot and store at -20°C or colder (without azide).