

## SSB Antibody / Sjogren syndrome type B antigen / Lupus La protein (F48218)

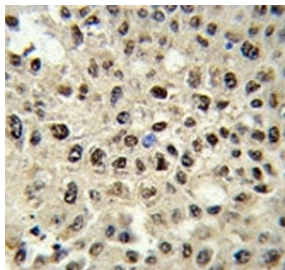
Catalog No.	Formulation	Size
F48218-0.4ML	In 1X PBS, pH 7.4, with 0.09% sodium azide	0.4 ml
F48218-0.08ML	In 1X PBS, pH 7.4, with 0.09% sodium azide	0.08 ml

[Bulk quote request](#)

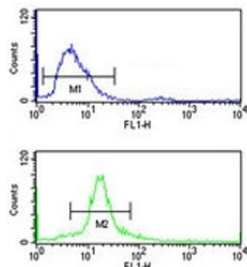
<b>Availability</b>	1-3 business days
<b>Species Reactivity</b>	Human
<b>Predicted Reactivity</b>	Bovine
<b>Format</b>	Purified
<b>Host</b>	Rabbit
<b>Clonality</b>	Polyclonal (rabbit origin)
<b>Isotype</b>	Rabbit Ig
<b>Purity</b>	Purified
<b>UniProt</b>	P05455
<b>Applications</b>	Western Blot : 1:1000 IHC (Paraffin) : 1:50-1:100 Flow Cytometry : 1:10-1:50
<b>Limitations</b>	This SSB antibody is available for research use only.

95  
72  
55  
36  
28  
17

Western blot analysis of SSB antibody and 293 lysate.



IHC analysis of FFPE human hepatocarcinoma stained with SSB antibody



SSB antibody flow cytometry analysis of 293 cells (bottom histogram) compared to a negative control cell (top histogram). FITC-conjugated goat-anti-rabbit secondary Ab was used for the analysis.

## Description

SSB is involved in diverse aspects of RNA metabolism, including binding and protecting 3-prime UUU(OH) elements of newly RNA polymerase III -transcribed RNA, processing 5-prime and 3-prime ends of pre-tRNA precursors, acting as an RNA chaperone, and binding viral RNAs associated with hepatitis C virus. This protein was originally defined by its reactivity with autoantibodies from patients with Sjogren syndrome and systemic lupus erythematosus.

## Application Notes

Titration of the SSB antibody may be required due to differences in protocols and secondary/substrate sensitivity.

## Immunogen

A portion of amino acids 66-96 from the human protein was used as the immunogen for this SSB antibody.

## Storage

Aliquot the SSB antibody and store frozen at -20oC or colder. Avoid repeated freeze-thaw cycles.