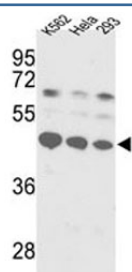


## SS-B Antibody / Sjogren syndrome type B antigen / Lupus La protein (F48219)

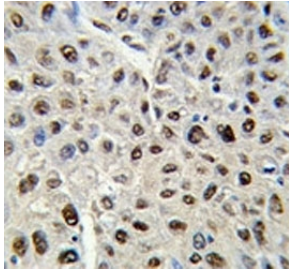
Catalog No.	Formulation	Size
F48219-0.4ML	In 1X PBS, pH 7.4, with 0.09% sodium azide	0.4 ml
F48219-0.08ML	In 1X PBS, pH 7.4, with 0.09% sodium azide	0.08 ml

[Bulk quote request](#)

<b>Availability</b>	1-3 business days
<b>Species Reactivity</b>	Human
<b>Predicted Reactivity</b>	Rabbit
<b>Format</b>	Purified
<b>Host</b>	Rabbit
<b>Clonality</b>	Polyclonal (rabbit origin)
<b>Isotype</b>	Rabbit Ig
<b>Purity</b>	Purified
<b>UniProt</b>	P05455
<b>Applications</b>	Western Blot : 1:1000 IHC (Paraffin) : 1:50-1:100
<b>Limitations</b>	This SS-B antibody is available for research use only.



Western blot analysis of SS-B antibody and K562, HeLa, 293 lysate.



IHC analysis of FFPE human hepatocarcinoma stained with SS-B antibody

## Description

SSB binds to the 3' poly(U) terminus of nascent RNA polymerase III transcripts, protecting them from exonuclease digestion and facilitating their folding and maturation. [UniProt]

## Application Notes

Titration of the SS-B antibody may be required due to differences in protocols and secondary/substrate sensitivity.

## Immunogen

A portion of amino acids 366-397 from the human protein was used as the immunogen for this SS-B antibody.

## Storage

Aliquot the SS-B antibody and store frozen at -20oC or colder. Avoid repeated freeze-thaw cycles.