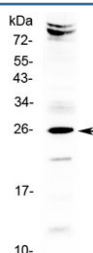


## SRY Antibody / Sex-Determining Region Y (Middle Region) (R32850)

Catalog No.	Formulation	Size
R32850	0.5mg/ml if reconstituted with 0.2ml sterile DI water	100 ug

**Bulk quote request**

<b>Availability</b>	1-3 business days
<b>Species Reactivity</b>	Human
<b>Format</b>	Antigen affinity purified
<b>Clonality</b>	Polyclonal (rabbit origin)
<b>Isotype</b>	Rabbit IgG
<b>Purity</b>	Antigen affinity
<b>Buffer</b>	Lyophilized from 1X PBS with 2.5% BSA and 0.025% sodium azide
<b>UniProt</b>	Q05066
<b>Applications</b>	Western Blot : 0.5-1ug/ml
<b>Limitations</b>	This SRY antibody is available for research use only.



Western blot testing of human HeLa cell lysate with SRY antibody at 0.5ug/ml. Predicted molecular weight ~24 kDa.

### Description

This intronless gene encodes a transcription factor that is a member of the high mobility group (HMG)-box family of DNA-binding proteins. This protein is the testis-determining factor (TDF) or Sex-determining region Y (SRY), which initiates male sex determination. Mutations in this gene give rise to XY females with gonadal dysgenesis (Swyer syndrome); translocation of part of the Y chromosome containing this gene to the X chromosome causes XX male syndrome.

### Application Notes

Optimal dilution of the SRY antibody should be determined by the researcher.

## Immunogen

Amino acids 90-130 (ISKQLGYQWKMLTEAEKWPFQEAQKLQAMHREKYPNYKYR) were used as the immunogen for the SRY antibody.

## Storage

After reconstitution, the SRY antibody can be stored for up to one month at 4°C. For long-term, aliquot and store at -20°C. Avoid repeated freezing and thawing.